



Annual Report 2016

**BETTER
TOMORROWS**

CONTENTS

04 Our Focus.

How helping young people today creates brighter futures.

07 Messages from the Archbishop, Chairman & Chief Executive Officer.

10 Our Symbol.

The inspiration behind our new look.

12 Our Vision.

Reconciliation Action Plan

14 Prevent.

Minimising harm is the first step in improving lives.

18 Protect.

The importance of providing safe, nurturing environments for children & young people.

24 Empower.

Lasting change enables young people to fulfil their potential.

28 Our Campaign.

The Home Stretch campaign. Extending out-of-home care to age 21

30 Our voice in the community.

Drawing attention to important issues.

32 Our Staff and Volunteers.

34 Chairman's Awards.

36 The Board, Regional Directors and the Executive Group.

38 Financials.

42 Our Donors, Supporters and Fundraisers.

44 Thank You.

46 Our Entreaty and Our Offices.



**BETTER
TOMORROWS**

BETTER TOMORROWS



OUR FOCUS

BETTER TOMORROWS FOR OUR VULNERABLE YOUNG & THEIR FAMILIES

As the proverb goes, it takes a village to raise a child. In our society, it takes our whole community. All of us share a responsibility to ensure that every young person is equipped today to tackle the challenges that tomorrow will bring - by giving them hope, inspiration and essential life skills, which empower them to make positive contributions to our society as responsible, well-adjusted individuals. Our focus at Anglicare Victoria is to ensure that no child, young person or family misses out on this fundamental human right. In short, it's to create 'better tomorrows' for these vulnerable groups living amongst us.

Our focus is both short and long-term. It's about addressing immediate, pressing needs such as finding a safe place for those afflicted by family violence or who find themselves homeless.

It's also very much about examining underlying causes of disadvantage, vulnerability and despair to stop negative cycles perpetuating from one generation to the next. We are all about creating the conditions from which new generations of sustainable, happy families can grow, thrive and prosper thanks to good parenting, loving relationships, proper education, vocational opportunities, and government policy reform. When we succeed, we all succeed – the vulnerable and society at large.

Anglicare Victoria's focus is gained through three lenses, through which we search for ways to:

- **Prevent.**
- **Protect.**
- **Empower.**

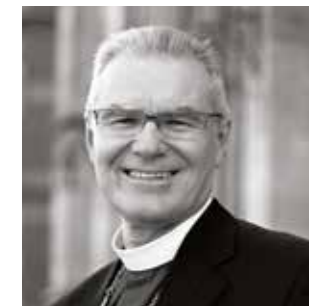
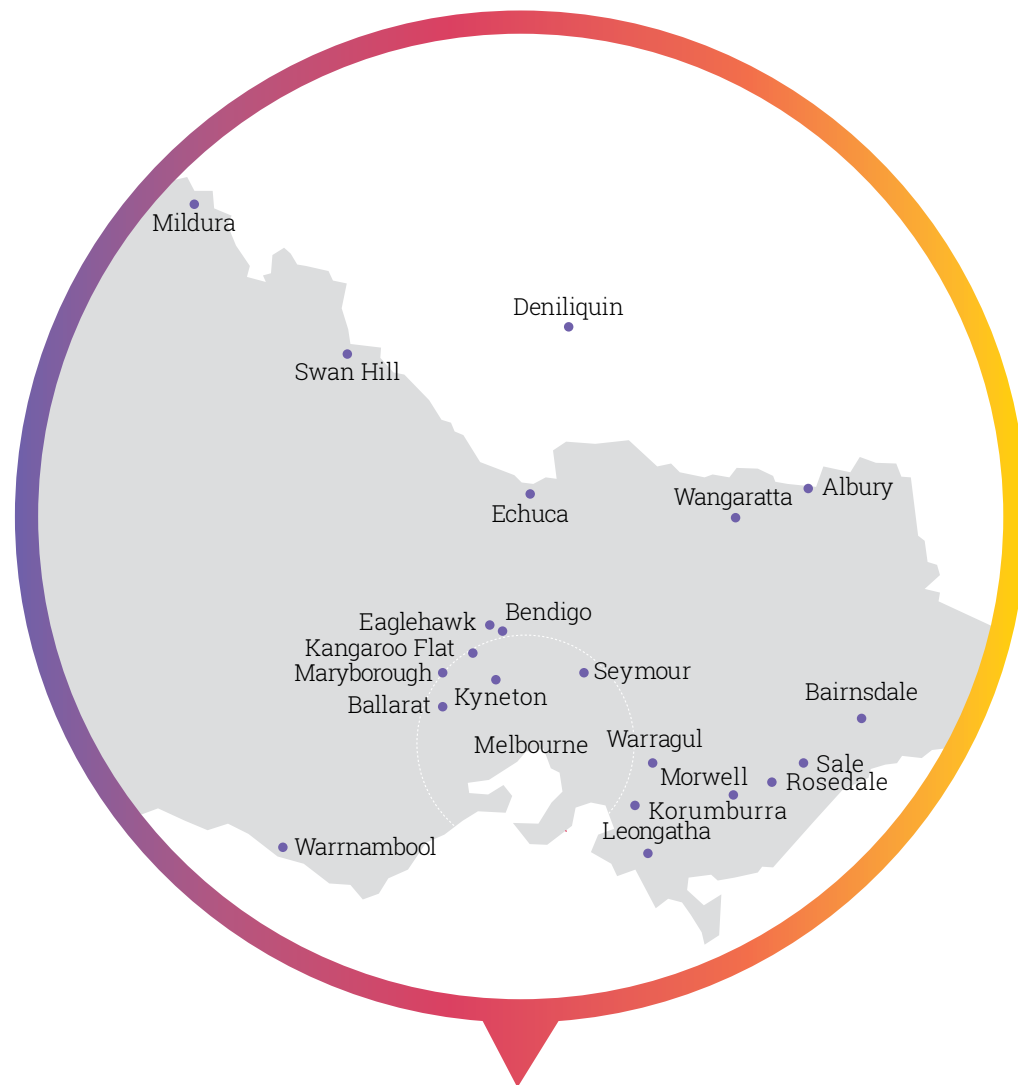
Through our 'Prevent' lens, we identify families at risk of disintegrating, individuals prone to disadvantage, and young people likely to experience further harm. We then seek to prevent those negative outcomes.

Using our 'Protect' lens, we focus on bringing children and young people into nurturing and safe environments in which they can start to rebuild their lives through foster care and behavioural change programs.

Ultimately, through our 'Empower' lens, we pinpoint the support and skills that build confidence, resilience and, above all, hope that can inspire lasting change giving everyone a chance to lead happier, healthier, more connected and productive lives as responsible adults. We also look for policy reform that can help us meet this goal.

As if through a telescope, these three lenses enable Anglicare Victoria to focus on longer-term outcomes, envisaging and aspiring to achieve better tomorrows far beyond our current critical role of ensuring the immediate safety and well-being of the children and young people we care for today.

ARCHBISHOP'S MESSAGE



"People share with me their hopes and dreams and the resources that are assisting them in gaining life skills with which to build their dreams."

In my role as Archbishop I am privileged to hear of the needs of vulnerable children, young and old adults and families, whether long term Australian citizens or new migrants. These experiences deepen my understanding of the crucial role that the Anglican Church through its parishes and agencies play in bringing practical support and hope to the most vulnerable in our state.

Anglicare Victoria's role is strategic and significant as it strives to fulfil its mission of creating a more just society by expressing God's love through service, education and advocacy. In short, Anglicare seeks ways to be Christ's heart of compassion and justice to those in need. This compelling imperative lies at the centre of the ministries and services that you will read of in this Annual Report.

These services take many forms and are delivered by volunteers and paid staff, always maintaining professional standards and seeking positive outcomes for the children, young people and families. Resourcing these services is essential

and costly. I take this opportunity to express my gratitude to donors, parishes and government for their commitment to the provision of assistance to our community's most needy members.

Through its diverse services, Anglicare is Jesus' arms of embrace to struggling families and individuals. This past year these services have included supporting families, running programs for victims of family violence, providing out of home care for children and assisting past clients as Anglicare works for long term life change, strengthening communities and much more.

I take pleasure in commending to you Anglicare Victoria's work and this Annual Report.

The Most Reverend Dr Philip Freier
Archbishop of Melbourne



CHAIRMAN'S MESSAGE



"As we approach our 20th year, we remain focused on identifying the means to further support vulnerable children, young people and families in our community."

The Board and Senior Management have begun work on our next Strategic Plan – one that, when it begins to be implemented in 2017, will enable us to reach still more of those in need in new and enhanced ways.

Our rolling Ten Year Property Strategy has seen the agency plan for further improvement to the environment where our staff and clients work together – and in the locations where this is needed most. The first major building project has now been successfully completed – on time and under budget. A new purpose built two storey building is a welcome addition to our Broadmeadows office.

The first function I attended as Chairman was the launch of the Anglicare Victoria Partnership Group - the successor to the outstanding work of the very many auxiliaries that have supported us and our predecessor agencies for over 100 years. A Partnership Group can be formed anywhere - in a Parish, in a workplace, as part of another Club or interest group, among friends - wherever there are those with a desire to encourage and support what we do.

Anglicare Victoria has continued to build on our reputation as a thought leader in the sector and much of the credit for this must go to our CEO, Paul McDonald, whose knowledge and insight have placed the Agency at the centre of debate, advice and reform. And who will forget his spirited presentation of our new credo. **"Prevent, Protect and Empower"** which speaks so clearly of what we are endeavouring to achieve for those at the centre of all that we do.

In this past year, Anglicare Victoria's 1,300 staff, 2,000 volunteers, our donors and supporters have assisted more than 80,000 members of our community to find brighter futures and **BETTER TOMORROWS.**

In sincerely thanking you all for bringing this about I also pay tribute to our departing Chair, Damian Neylon, for his leadership and immense hard work for the Agency and to his successor Hon Chris Pearce now based in the United Kingdom.

Stephen Newton AO
Chairman

CEO'S MESSAGE



"I am very excited about the better tomorrows we can and will create together. This year's Annual Report captures some of this outstanding progress."

The Royal Commission into Family Violence delivered its report to government on 29 March 2016 following a 13-month inquiry into how to effectively tackle many of the challenges that Anglicare Victoria has been striving to overcome for years. How to prevent family violence, how to improve early intervention, how to support victims and better co-ordinate community and government responses are the big issues that we deal with every day. Meanwhile, we also seek longer-term solutions to break intergenerational cycles of violence; to prevent today's innocent child growing into tomorrow's violent parent.

We made our submission to the Royal Commission 10 months earlier in May 2015, calling for greater accessibility to critical programs and more training for better co-ordination between social workers, other intervention services staff and police. We were pleased to see our thought leadership reflected in the Royal Commission's report and thrilled to see our 'Beyond the Violence' program highlighted as one of the few programs in Victoria that work directly with both the mother and child to strengthen the parent-child relationship and rebuild families experiencing violence in the home.

In aeronautical parlance, we've been increasing our 'runway speed' over the past year, ready to 'take flight' in 2017 as we implement our latest Strategic Plan, which will deliver life-changing outcomes through innovation and agility in our work. We'll be adapting international evidence-based programs locally, and resourcing our services to further support our staff in securing Anglicare Victoria's sector leadership in terms of innovation of service, responsiveness to clients and effectiveness in outcomes.

I take this opportunity to thank all our staff, volunteers, carers, donors and the Board for their marvellous efforts and their commitment to the organisation we are.

Above all, I sincerely thank our clients for the privilege of being involved in their lives, and the opportunity to help them achieve the hopes and dreams they aspire to.

Paul McDonald
Chief Executive Officer

OUR SYMBOL

EMBRACING A NEW LOOK



It's obviously an A but it's much more than that. Logos are famously open to different interpretations, but the graphics and colour schemes really aren't all that important in the end. What's important is what the logo represents - that we fulfill our promise to the young people and families we care for; that we succeed in creating 'better tomorrows.'

Whenever our clients see our new logo, launched in March 2016, we want it to inspire in them a positive feeling about the organisation it symbolises, to see it as a beacon of hope in spite of the negative experiences they're currently grappling with.

We want them to consider that there's always an upside and to recognise the potential to move up out of a difficult situation, and forward to a better place and time in the future.

Others might take a top-down view and see it as a symbol of embrace, like two outstretched arms hugging them to provide much-needed comfort. As our Archbishop, the Most Reverend Dr Philip Freier, put it: "Anglicare is Jesus' arms of embrace to struggling families and individuals."

We also want it to resonate in similar ways with the wider community, which we rely on to achieve what we have set out to do transforming the future of vulnerable young people and their families. Our new logo has been developed to provide a symbol of this core mission through consultation with our clients and staff across Victoria, including our new St Luke's colleagues following the merger in 2014. As such, it will also serve as a narrative touchpoint informing not just our visual identity, but the stories that both we and others tell about the work of Anglicare Victoria.

We expect our new logo to contribute to attracting more volunteers, new staff, additional funding and further donations.



OUR VISION FOR RECONCILIATION

Anglicare Victoria respects Aboriginal and Torres Strait Islander history and diversity. We recognise the impact of past and current injustices, and we're genuinely concerned that today's Indigenous Australians are still facing disproportionate levels of inequity, poverty and disadvantage compared to non-indigenous citizens.

The number of Indigenous Australians coming into out-of-home care is 9.5 times the rate as non-Indigenous Australians, according to the Family Matters journal. This is unacceptable and highlights the need for extra support so that they too can meet their greatest potential in family and community. We believe relationships, respect, opportunities and accountability are the keys to unlocking the doors to that potential.

We have continued working hard over the year to build trust and improve relationships with Aboriginal families and communities. We've sought to deliver child, youth and family services that are perceived as respectful and safe by Indigenous Australians.

We are proud of the relationships and work we have forged with many Aboriginal community controlled organisations including Goolam Goolam, VACCA, Njernda, GEGAC, Ramahyuck, BDAC, MDAS and others.

One example of this work is the partnership with the Bendigo District Aboriginal Cooperative (BDAC) establishing a ground breaking Memorandum of Understanding between mainstream and Aboriginal organisations receiving Government and state-wide praise for its directness and approach to addressing the key issues that affect Aboriginal children, youth, families and communities.

An official Reconciliation Action Plan (RAP), which bears the Reconciliation Australia Trademark guides our work and keeps us focussed on our vision for reconciliation. Our RAP requires staff develop their cultural competence through internal communication and training that deepens their knowledge and understanding of local Aboriginal and Torres Strait Islander history, cultures and traditions, and local Aboriginal-controlled services.

It involves procuring artwork and other symbols that help to create welcoming environments and signal our respect and recognition of a rich cultural heritage. It involves creating employment opportunities for Aboriginal and Torres Strait Islander people, and much more.

We remain accountable to our RAP objectives through the Anglicare Victoria Reconciliation Action Plan Steering Committee, which comprises staff from a variety of backgrounds across Anglicare Victoria, including two Aboriginal staff members. This committee in turn consults with communities and community elders like Aunty Carolyn Briggs, Chair of the Boon Wurrung Foundation.



OUR PURPOSE

TO PREVENT

PREVENTING ANGER, PHYSICAL HARM & FEAR

Sita's Story

Sita's* story provides one example of how Anglicare Victoria has sought to prevent anger, physical harm and fear within families.

Sita wanted to "stop showing...[her] anger with the kids and show them...loving kindness" instead. She was referred by the Department of Health & Human Services to Anglicare Victoria's 'Parentzone', officially known as our 'Parents Building Solutions' program.

Sita confided that she had been shouting and smacking her children when they wouldn't follow instructions. Through the group program, Sita learnt new skills and strategies to deal with her own feelings, which led to a more calm and consistent approach when dealing with her children. She began using family meetings, rules, consequences and praise as positive parenting tactics, while also making time to care for herself and her own needs.

Sita's evaluation of the program left her "really impressed" by highlighting to both her and her children the consequences of making "good or bad" choices. She had stopped the bad choice of resorting to the "shouting, anger and smacking," which in turn made her relationship with her kids closer, even "intimate" and giving the kids the freedom "to talk to their mum about anything."

Most telling of all, Sita wrote in her evaluation that her children "are no longer scared of interacting with me."

We often hear from parents that attending Parentzone is one of the best things they've done for their kids. So what does it actually involve? Parentzone is an evidence-based program tailored to each parent's goals and needs. It is designed to prevent anger, physical harm and fear within families by helping parents be calmer, more confident, better able to manage their own and their children's feelings, and set reasonable, appropriate consequences for misbehavior.

The results speak for themselves, with recent evaluation of parents' feedback highlighting that Parentzone has resulted in:

- **89% of family interactions changing for the better; and**
- **90% of the children involved improving their behaviour.**

The data collated and analysed by our Parentzone Southern Team to evidence the outcomes parents achieve through attending parenting programs has been endorsed by the Australian Institute of Family Studies and the team's great work has helped secure additional funding to hire new staff so that we can roll out more programs in the community to prevent destructive parenting creating environments of anger, physical harm and fear.

* Names & images have been changed to protect client privacy

PARENTZONE
3,216 PARENTS
received support from our
Parentzone programs.





RAPID RESPONSE

70

FAMILIES
WERE ASSISTED

TO PREVENT (cont)

MAKING IT POSSIBLE FOR KIDS TO STAY IN THEIR OWN HOMES

Our 'Rapid Response' program works with families where children are at risk of being placed in out-of-home care. Kids prefer to be in their own home.

In most cases, it's actually better that they stay there than be further disrupted and traumatised by removal from familiar surrounds and the people they love. As our expert staff will often say: "It's the problem that's the problem – not the person, and the family is generally the best-equipped to tackle the problem and solve it. They just need help."

Over the past year, our Rapid Response staff worked with **70 families with children at risk** of being placed in out-of-home care. They succeeded in keeping **87% of these families' children (61 kids)** in the family home. Nine were placed in out-of-home care.

NURTURING INFANTS – FROM CRADLE TO KINDER

'Cradle to Kinder' is an intensive ante and postnatal support service for vulnerable mothers and their children that helped **62 families** over 2015/16. Our multidisciplinary team provides case management and support to develop parenting capacity and address factors that contribute to a family's vulnerability. 72% of the cases that closed in the last year achieved one or more of the goals set out in their case plans.

Our staff provided **12,394 hours of service** to Cradle to Kinder clients in the past year, working with families from the early stages of pregnancy to reduce risks and maximise their strengths.

It is a privilege for our staff to play a role in these young families' lives as they make significant positive changes to enable a better future for themselves and their children.



BEYOND THE VIOLENCE

80%

OF PARENTS

Reported their parenting
had improved following
participation in the program.

BEYOND THE VIOLENCE

70%

OF PARENTS Reported their interactions
with their children had
changed for the better.



TO PROTECT

PROTECTING FAMILIES FROM VIOLENCE

We achieve this purpose in four key ways:

- Protecting families from violence
- Making it possible for kids to stay in their own homes
- Nurturing infants – from cradle to kinder
- Providing new hope in a new home

The Royal Commission into Family Violence identified Anglicare Victoria's 'Beyond the Violence' program as one of the few programs in Victoria that work directly with both the mother and child to strengthen the parent-child relationship and rebuild families experiencing violence in the home.

The program implements measures to deliver an effective response through shared therapeutic interventions for both women and children in the post-crisis period. The Royal Commission identified such support for both mother and child as "Best Practice."

Violence tends to be inter-generational. Once families are caught in a cycle of violence, it can be hard to break free of its effects. The Beyond the Violence program aims to provide mothers and their children with a safe environment in which to rebuild relationships and move forward with their lives.

Cathie Valentine, Anglicare Victoria's South-East Community Services Manager, explained how the program works: "We start with the parents exploring their options in one group as their children play and learn in the Children's Room. Importantly, they also unlearn certain

behaviours in this safe environment designed to stimulate self-discovery through play. The kids have an opportunity to explore why rules work and what rules are important, especially those concerning safety. The children learn to deal with the consequences of not playing fairly, discover how to make friends, share, and find constructive ways to halt abusive behaviour directed at them. In short, they find new ways of interacting to find acceptance through fun."

Cathie explains how the program then goes on to help participants refocus from the past to the future, to set new goals to aspire to: "We don't focus on the past. We walk beside the parents and children in their family groups, as they set their future family goals. Sometimes they fall back into old ways but ultimately they find ways to praise each other, and co-operate instead of fighting. They tell their stories with pride;

mothers speaking of their children as being more thoughtful, talkative, less reactive - particularly after contact with their abusive parent. Each child and parent receives a certificate that swells their pride as they are acknowledged for their hard work and commitment to their healing journey."

Cathie acknowledges that journey is not a quick and easy one. "We so wish the program could heal them completely, but of course life is more complicated than that. However, we remain deeply grateful and privileged to be part of their healing journey, offering a sign-post to a better tomorrow, a step in the right direction."

FOSTER CARE
905
FOSTER CARE TOTAL

RESI CARE
118
RESIDENTIAL CARE TOTAL

ANGLICARE VICTORIA RECRUITED
128
New foster carers

KINSHIP CARE
86
Kinship Care Total

TO PROTECT (cont)

PROVIDING NEW HOPE IN A NEW HOME

A foster carer's story

Meryl Adams and her husband started fostering 11 years ago, adding to their own brood of four. Here she explains why they chose to start and what they've gained from it.

"My parents had been foster parents, and it was something we had always wanted to do.

We felt that as a family, we could offer a loving and safe home for babies and children; at the same time we wanted to give our own children the opportunity to develop the compassion and empathy that would come from being big brothers and sisters to these children, and to understand that not every child feels special or loved. To me, being a foster mum means caring for, loving and nurturing traumatised children, especially those with special needs. Many come with scars and bruises - the physical we can see and the emotional we see in their behaviours. For most, we can't begin to imagine what they have experienced.

Some children are challenging. But to see the difference in them once they start to feel safe and secure is just amazing. It can be as dramatic as seeing a baby born drug-addicted and needing to be tube-fed, who after seven months is finally able to feed without a tube and go on to be adopted. Sometimes it's as simple as a smile from a child who has not smiled in the two weeks since they arrived.

There is a story about a little boy, walking along a beach covered in washed up starfish. A man watched him walk along picking up the starfish, and throwing them back into the ocean. He approached the boy and asked why, as he couldn't possibly make a difference, there were just too many. But as the boy picked up another starfish, he said, "I'm making a difference to this one".

For some it may be the first time they've had enough to eat, or a safe bed, or somewhere they don't need to feel afraid. Or where they know they are loved and cared for. Every child deserves these things to reach their full potential."

"It is hugely
rewarding when
we can be that
difference in these
children's lives."

Meryl Adams
Foster Carer



TO PROTECT (cont)

SUPPORTING FOSTER CARERS

People from all walks of life can become foster carers who can make a positive difference in a child's life. It doesn't matter what your personal relationship, age, working or parental status is, Anglicare Victoria is here to support carers and children alike to create better outcomes for everyone involved.

Bronwyn Kellett who is part of our Foster Carer Recruitment team explains: "Our foster carers play a vital role in providing safety, stability and love to children and young people in need. Whether it's providing emergency, respite or longer-term care, every foster carer makes a difference. By opening up their hearts and homes they give children a chance to achieve a brighter future."

Senior Foster Care Case Manager Kate Hansen adds: "I have been a foster care case manager for 15 years. I chose the field as I love working with younger people. Children have so much potential and there is great opportunity that lies ahead of them. I also value working alongside the foster carers who open their hearts and homes to little people."

Kate says her job has its trials and tribulations, it's ultimately very satisfying, even pleasurable. "Whilst working within the system has its challenges and frustrations, there are also many positives in this job. It is a constant reminder for me of the community spirit that surrounds us. I work with a sibling group of three who have been able to stay together in placement. The carers are even renovating their home to accommodate the children as they grow. They work tirelessly to meet the needs of each child. Consequently all have made significant gains in education, health, emotional and behavioural development. There are aspects of the foster care field that are less than enjoyable. However, supporting this placement and others like it and being part of the repair work is a pleasure," she says.

PLACING KIDS IN THE RIGHT HOME ENVIRONMENT

Targeted Care Packages (TCPs) are an initiative of the Department of Health and Human Services in response to the State Government priority to reduce the number of children and young people living in residential care.

TCPs are creative and innovative placements developed around an individual's needs, with a wrap-around service incorporating all aspects of support and brokerage required in order for them to successfully transition out of residential care to any alternative form of placement where their needs will be better met. Anglicare Victoria has led the way implementing this government initiative. We support children and young people in these new arrangements in a variety of ways, depending on their individual circumstances. It's never a cookie-cutter solution. For some, it's being placed with parents, family or friends; for others, with a foster carer. Independent or semi-independent living, or other forms of care may provide a more suitable arrangement in other cases. It really depends on each young person's needs and situation.

Anglicare Victoria established
38 TARGETED CARE PACKAGES
during the past year

FOSTERING CONNECTIONS

Each year in Victoria, there's a shortfall of more than 300 foster carers for children and young people. The state's 26 foster care agencies have united to form 'Fostering Connections,' a campaign launch at the start of 2016 to raise awareness of foster care and make it easier for interested people to take the first step. The campaign's emphasis is on the little things potential foster carers can do to transform a child's life in their care.

Anglicare Victoria is proud to be a major partner in this important campaign to connect with the community and close the foster-carer shortfall.

A 'BRIGHT & SUNNY' HOME FOR YOUNG PEOPLE IN A DARK PLACE

'Alkira' means bright and sunny according to Aboriginal lore. It's a fitting namesake for our Residential Program in Seymour, Victoria, which has been in operation since 2013.

Lisa Cappola, who leads our highly skilled and passionate Residential Care team, explains Alkira's purpose: "Alkira is 'home'; a place where residents can say 'I belong.' We're here to provide a safe, homey environment to young people aged 12 to 18 years in the heart of the Goulburn region. Our residents have complex care needs resulting from trauma or crisis and are therefore at higher risk of harming themselves and others."

At Alkira, these troubled youth are given an opportunity to reconnect with others, reinstating safe adult relationships and a sense of self-worth to create better tomorrows.

"I always knew you cared. You would ring me off the hook to get me home, and Alkira was my home." That's the value Alkira provides as seen through the eyes of one of its former residents.

This sense of Alkira being "home" is perpetuated well beyond age 18, as another former resident explains: "I can't wait to come and introduce my partner and show you my new baby. I told my girlfriend that no matter what I did they always accepted me and Alkira was always my home".

Alkira also works proactively with its local community, service providers and police to strengthen partnerships and provide a strong community care response. An example of this partnership is a footy match and BBQ between Alkira and the local police to take place before the 2016 summer.

Alkira is one of 18 residential units that can house up to 110 young people, although they're typically home to around 70 residents at any given time.





TO EMPOWER

FINANCIAL ADVICE

We seek to empower our clients through:

- Financial advice
- Transforming our children’s educational aspirations and achievements
- Extending the opportunity to succeed
- Amplifying the political voice of youth
- Responsibility to influence what we do
- Professional development of human service workers and educators

Empowering Emma

Financial Counsellor Anne Clarke tells how Anglicare Victoria empowered a woman to successfully manage a financial crisis after suffering a stroke.

"Emma*, a 35 year-old wife and a mother, suffered a stroke, forcing her husband John to take time off work to support her through six months of rehabilitation and consequently plunging the family into a financial crisis. Emma was referred to Anglicare Victoria with a mortgage in arrears, unpaid utility bills, a car loan and debt on several credit cards.

I was able to negotiate with their bank to put the mortgage payments on hold for six months. I did the same for their credit cards, suspending repayments, interest and fees. We then applied for a Utility Relief Grant of \$500 each for the gas, electricity and water accounts. Emma and John also sold their car, swapping it for a cheaper one. The aim was to alleviate the financial pressure so Nicole could continue her recovery and return to work.

I have been a financial counsellor for more than 20 years and it felt such an honour to work with Emma. Despite the tragedy, Nicole was always very proactive and willing to work with me to achieve her family’s desired outcomes. She often said how our service meant she didn’t

feel alone in dealing with it all. Sometimes when she was not going so well, my support role would increase. At other times, I could step away. Mostly I admired her determination and strength. I have learnt so much over the years from the many clients like Emma, who I have had the privilege to walk with for a time."

* Names & images have been changed to protect client privacy



165

Schools or alternative learning environments have participated in the TEACHaR Program.

185

Children and young people in out-of-home care have been supported in the TEACHaR Program.

TO EMPOWER (cont)

TRANSFORMING OUR CHILDREN'S EDUCATIONAL ASPIRATIONS & ACHIEVEMENTS

Our 'TEACHaR' program is literally 'Transforming Educational Achievement for Children in Home-based and Residential care'. Anglicare Victoria created this program in response to evidence that children and young people living in out-of-home care often experience poor education outcomes compared to the general student population. Disengagement and under-achievement at school are common for children and young people in out-of-home care. Frequent moves, changes in schools and/or placements and extended absences put them at a distinct disadvantage.

The TEACHaR program is committed to working across student, school and placement contexts to address these issues, providing direct support to help fill gaps in their education.

Now in its fourth year of operation, TEACHaR has, since its inception in January 2013 (to December 2015) supported approximately:

- 185 children and young people in out-of-home care.
- 165 schools or alternative learning environments.
- 450 teachers and other staff within schools.

The results speak for themselves, with recent data highlighting that students involved with the TEACHaR program for at least 12 months are:

- More likely to attend school, with truancy rates falling from 14.3% to 2.4%.
- More actively engaged in learning, with an engagement uplift of almost 20%, from 54.7% to 73.8%.
- More literate, with the proportion of students achieving average or above average literacy skills more than doubling from 25.5% to 53.0%.
- Better at maths, with the proportion of students achieving average or above average numeracy skills also more than doubling from 20.5% to 48.8%.

This year, one student undertaking a VCE subject while in Year 10, also excelled in several other subjects and participated in the Duke of Edinburgh Award. TEACHaR's support is giving him the full school experience and the potential to turn his life around.

TEACHaR is possible due to the support and funding from a range of sources:

- Helen Macpherson Smith Trust
- The Flora & Frank Leith Charitable Trust
- The Alec Prentice Sewell Gift (managed by The Ian Potter Foundation)
- The Vera Moore Foundation
- The Hugh Williamson Foundation
- The Dyson Bequest managed by Equity Trustees
- R.M. Ansett Trust
- Mars-Stride Trust
- William Henry Pawsey Charitable Trust
- The Winifred & John Webster Charitable Trust Fund (managed by Perpetual)
- The Kimberley Foundation
- Victorian Department of Health & Human Services
- Victorian Department of Education & Training
- Federal Government's 'More Support for Students with Disabilities' Education Initiative

TEACHaR WINS ROBIN CLARK AWARD

TEACHaR was nominated and won the prestigious Robin Clark Protecting Children Education Initiative Award in 2015.

Robin Clark was a widely respected and inspirational leader in the field of child, youth and family welfare. The eponymous award recognises staff working across all areas of the child protection and family support service programs in Victoria.

It acknowledges the work, commitment and dedication to service excellence and leadership at the highest standard, as well as recognising innovative education initiatives and contributions to policy and practice.



OUR CAMPAIGN



THE HOME STRETCH

Our advocacy for a young person to leave care later.

Anglicare Victoria launched the 'Home Stretch' campaign in August 2016 to persuade governments to follow the lead of other developed nations and give young people the option to remain in the care system until the age of 21, instead of being forced to leave when they reach 18 years of age. Under current policies, the system actually begins preparing them to leave care from as young as age 15, with most actually leaving when they're just 16 or 17.

Compare this to children in stable homes residing with one or both parents who have the option to remain at home well into adulthood. While almost 50% of 18 to 24 year olds in the broader population have yet to leave the family home, research indicates that 50% of those forced to leave the care system will either find themselves in the criminal justice system, unemployed, homeless or a new parent within the first 12 months of being left to fend for themselves.

In the United States and United Kingdom, care has been extended until the age of 21, which has resulted in doubling tertiary education participation while halving homeless rates. It is estimated that for every \$1 spent in extending care, the state is repaid \$2.50 in social benefits.

Our campaign launch immediately attracted supporters as #HomeStretch trended on Twitter for five hours, resulting in over 1,345 followers of the campaign in the first 24 hours from launch. More than 70 community organisations and agencies have now signed up to pledge their support of this critical awareness and advocacy campaign.

The Home Stretch campaign is based on solid academic and economic research, including a 2015 Swinburne University study of 400 homeless young people, which found that almost two-thirds of them (63%) had recently left care. Whilst there are some services to assist with the transition, too many young people are still struggling to cope independently after a life in state care. Our Home Stretch campaign is lobbying governments around Australia to follow the lead of other developed nations by extending the provision of state care beyond 18 years to 21 years of age.

To assist our campaign efforts, we commissioned Deloitte Access Economics to conduct a study into the cost and benefits, including social and economic costs and benefits of extending care to age 21 - both for young people and the state.

The study findings reveal that:

- Homelessness for 18-21 year olds leaving the care system would be halved.
- Hospitalisation would decrease 10%, from 29.2% to 19.2%.
- The probability of arrest would fall from 16.3% to 10%.
- Mental and physical health would improve, reducing intergenerational disadvantage and increasing social connectedness.
- There would be a cost-benefit ratio of between 1.84 and 2.53, meaning that every dollar it would cost to extend care to age 21 would return between \$1.84 and \$2.53 in savings or income to the state.



www.thehomestretch.org.au

Within one year, 50% of state care leavers will be unemployed, in jail, homeless or a new parent.

Extending out-of-home care until the age of 21 will help ensure thousands of young people avoid the pitfalls in the home stretch to adulthood through essential additional guidance and support.

The Home Stretch advocacy campaign is supported by the Community Services Trust and is possible due to the support and funding from:

- **Raising our Children: Guiding young Victorians in care into adulthood.**
- **Collier Charitable Fund and the Louis & Lesley Nelken Trust Fund, managed by Equity Trustees, which funded the report by Deloitte.**

OUR VOICE IN THE COMMUNITY



AMPLIFYING THE POLITICAL VOICE OF YOUTH

For we are young and free

Our CEO Paul McDonald appeared on ABC News 24 to highlight an important youth issue in the lead up to the July 2016 Federal Election: the lack of eligible young people enrolled to vote. Paul emphasised how unhappy and disheartened many are with the political process. "Young people are the indifferent wild cards in the federal election. If they mobilised, they could make the difference. But indications are many of them won't bother. Too many young people are disengaged from the political process. It is not until young people reach their mid-20s that enrolment and voting rates begin to reach the levels of older adults."

"Canberra has no youth policy or agenda for youth. No wonder young people will be turning the other way when Australia votes on 2 July and uttering 'whatever'," Paul said.

Anglicare Victoria is committed to giving our youth a political voice, and encourages them to use their democratic right to vote as one more tool of empowerment.

We have also used mainstream and social media to amplify messages, posting more than 220 Facebook posts and 174 tweets, to reach more than 230,000 Facebook followers, and leaving 136,321 twitter impressions.



RESPONSIBILITY TO INFLUENCE WHAT WE DO

Ambassadorship opportunities

Children and youth are at the core of Anglicare Victoria's work, so it's essential that their voice is heard loud and clear when we come to plan policy, programs and organisational development. To empower them to influence change and development within our organisation, we are currently developing a 'Youth Ambassadors' program where representatives of the youth we help become our partners, offering valuable consultation, guidance and advice about their experiences, what works, and what could work better.

PROFESSIONAL DEVELOPMENT FOR HUMAN SERVICE WORKERS & EDUCATORS

Innovative Resources

For more than 25 years, Anglicare Victoria's 'Innovative Resources' has been producing learning and development tools and resources to help human service workers and educators deliver their services more effectively to help empower the people we strive to assist. It also provides another income stream to Anglicare Victoria to help our fund programs and infrastructure.

Innovative Resources now sells its resources and training programs nationally, and into Asia, Europe, UK, New Zealand, USA and Canada, generating over \$840,000 in sales over the 2015-16 financial year, with 35% of orders coming from overseas.

In 2016, Innovative Resources contracted to deliver training programs to more than 16 organisations, including Anglicare Victoria. This equates to approximately 10,000 hours of professional development to the sector.

www.innovativeresources.org

OUR STAFF AND VOLUNTEERS



Ariane Hahn
Beyond The Violence
Co-ordinator

1,300 STAFF

HIGHLY COMMITTED AND ENGAGED

Great client care and a commitment to make a real difference to children, young people and families in our care can only be achieved with highly committed, motivated and engaged staff. We constantly monitor and frequently measure the level of staff engagement, and it's pleasing to see our 2015 staff survey confirmed that Anglicare Victoria staff remain highly engaged and view Anglicare Victoria as a 'truly great place to work'.

BUILDING THE EXPERTISE OF OUR PEOPLE

We value the talent and expertise of our staff and support our great workforce by providing an extensive professional development program. This year, over 1,200 staff booked into our 'Learning @ Anglicare Victoria' training calendar, completing over 42 courses aimed at building professional skills and gaining additional qualifications.



2,000 VOLUNTEERS

Anglicare Victoria has over 2,000 volunteers working to deliver grassroots programs that strengthen communities. These volunteers run homework clubs, sewing groups, community gardens, parenting classes and learner-driver practice for refugees and recently arrived migrants.

They run specialist playgroups to prepare refugee children for preschool and school. Volunteers help us to deliver breakfast and other services to the homeless people in Melbourne's CBD and in Ballarat. They work to provide breakfast to over 600 school children per week, and support us in helping disadvantaged and isolated Victorians reconnect with their community.

Then there's our very special and dedicated foster carer volunteers, whose tenacious persistence is manifested in the stories of Meryl Adams (see page 20) and Meagan Taylor.

Going above and beyond their consuming day-to-day role as foster care volunteers, Meryl and Meagan sought a solution for foster carers facing difficulty finding clothing and resources to care for children in their foster care. It's an issue that also prevents some members of the community from becoming foster care volunteers.

Meryl and Meagan managed to secure a storage shed in the Melbourne suburb of Croydon free of charge on a 12-month lease. They have set up the shed, sourcing clothing donations from suppliers and categorising the clothes by size in clear containers so foster carers can easily access what they need. The shed now has a full supply of items that can be offered to foster families in an emergency or as required.

CHAIRMAN'S AWARDS



More than 500 guests attended the Anglicare Victoria Chairman's Awards on 26 August 2016 at the Melbourne Cricket Ground's Olympic Room to celebrate the achievements of our clients and staff last year. Congratulations to award winners as well as the runners up and all those nominated for awards.



CATEGORY	HIGHLY COMMENDED	WINNER(S)
FOSTERING FUTURES	Anne and Allen Berg Inner East Kinship Care	Jan Taylor Adoption & Permanent Care Maureen Drummond Family, Home Based Care
OUTSTANDING VOLUNTEER	Not applicable	Meryl Adams & Meagan Taylor Out of Home Care
INNOVATION	Not applicable	Kid's Time With Dad at Fulham Correctional Centre, Parentzone Gippsland
EXCEPTIONAL SERVICE TEAM	Not applicable	Koolkuna Team Eastern Residential Care Parentzone Southern Team Parentzone
EXCEPTIONAL SERVICE INDIVIDUAL	Brooke Christensen Family & Youth Services Kathy Ryan Parent Support Program Trevor Conrad Eastern Residential Care – TCP Home Based Care	Sudipta Chowdhury Southern Residential Care
EMERGING LEADER	Sinead Crowe Southern Residential Care	Jade Walsh Home Interaction Program for Parents & Youngsters – HIPPY
OUTSTANDING LEADER WINNER	Not applicable	Louise Baker Home Based Care

OUR EXECUTIVE GROUP

Mr Paul McDonald – Chief Executive Officer

Mr Chris Baring-Gould – Chief Financial Officer

Ms Elizabeth Holley – Director People, Culture and Community Relations

Ms Diana Holmberg – Director Business Strategy, Planning and Technology

Ms Brenda Petersen – Director Business Development

Ms Jenny Potten – Director Quality

Ms Sue Sealey – Director Client Services

Dr Anne Welfare – Principal Practitioner



OUR REGIONAL DIRECTORS

Ms Jane Anderson – Regional Director, Gippsland Region

Ms Antoniette Bonaguro – General Manager, Out of Home Care

Ms Andrea Dwyer – Regional Director, Southern Region

Ms Claire Nyblom – Regional Director, North-West Region

Ms Carolyn Wallace – Regional Director, St. Luke’s Region

Ms Marianne Watson – Regional Director, North Region

Mr Darren Youngs – Regional Director, Eastern Region



COMMITTEES OF THE BOARD

AT ANGLICARE VICTORIA, ONE OF OUR GREATEST ASSETS IS THE OUTSTANDING SERVICE AND DEDICATION OF OUR BOARD OF DIRECTORS.

- Property Committee (meets monthly)**

Archdeacon Ray McInnes (Chair)

Mr Chris Baring-Gould

Mr Ron Courtney

Mr Garry Dalton

Ms Amanda Derham

Mr Paul McDonald

Mr Stephen Newton AO

Ms Jenny Potten
- Risk Management and Audit Committee (meets quarterly)**

The Hon. Chris Pearce (Chair)

Mr Chris Baring-Gould

Mr Sanjit Black

Ms Amanda Derham

Mr Andrew Dix

Mr Howard Hamlyn

Ms Caroline Johnston

Mr Paul McDonald

Ms Jenny Potten

Ms Maria Polujnikoff
- Research and Advocacy Committee (meets bi-monthly)**

Mr John Unkles (Chair)

Dr Glenn Bowes AO

Ms Tatiana Corrales

Ms Laura David

Ms Margaret Hamilton

Mr Paul McDonald

Ms Jenny Potten

Mr Peter Young
- Finance Committee (meets monthly)**

Mr Geoff Walsh (Chair)

Mr Chris Baring-Gould

Ms Amanda Derham

Mr Peter Horsburgh

Ms Caroline Johnston

Mr Paul McDonald

Mr Stephen Newton AO

Mr John Unkles
- Quality of Care Committee (meets bi-monthly)**

Ms Caroline Johnston (Chair)

Mr John Chesterman

Mr David Giles

Mr Anthony Johnston

Ms Pauline Kelly

Mr Paul McDonald

Ms Jenny Potten

Ms Leonie Rooney

Ms Sue Sealey

Dr Anne Welfare
- Research Ethics Committee (meets monthly)**

Ms Pauline Kelly (Chair)

Ms Sally Alsop

Dr Tatiana Corrales

Rev. Robert Ferguson

Dr Michael Fotheringham

Dr Clem Gruen

Mr Gavin Kempin

The Reverend Malcolm Woolrich

Ms Elizabeth Yewers
- Employment Policy and Remuneration Committee (meets bi-monthly)**

Mr Stephen Newton AO (Chair)

Mr Chris Baring-Gould

Dr Glenn Bowes AO

Ms Elizabeth Holley

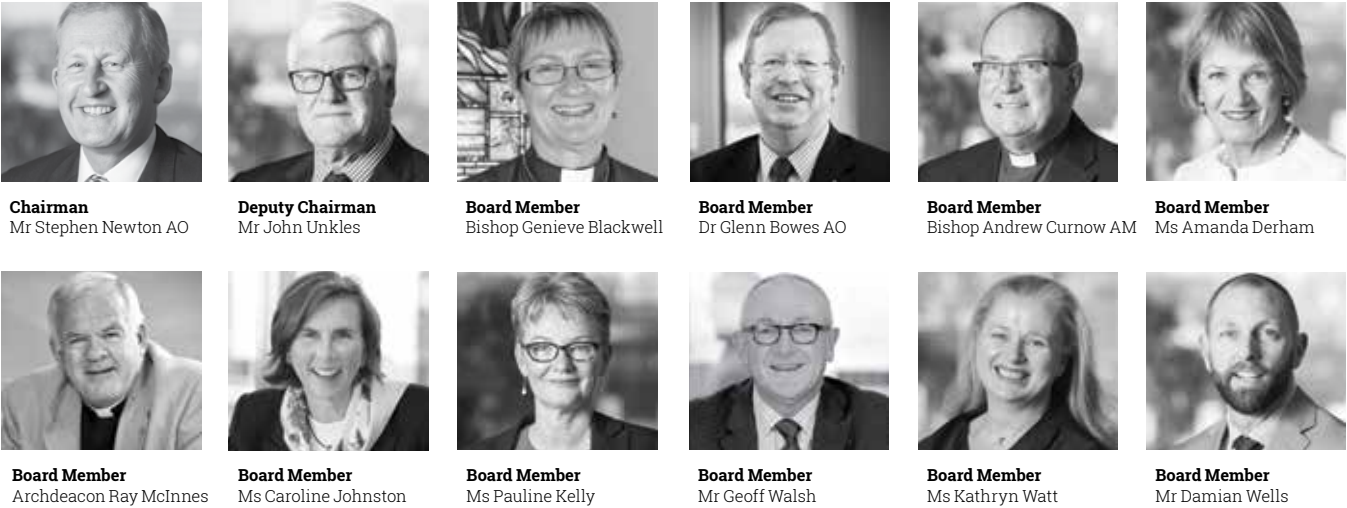
Mr Paul McDonald

Mr Damian Neylon
- Extraordinary Committees**

Strategy Committee (Board only)

Nominations Committee (Board only)

OUR BOARD



FINANCIALS

STATEMENT OF SURPLUS AND DEFICIT AND OTHER COMPREHENSIVE INCOME FOR THE YEAR ENDED 30 JUNE 2016

REVENUE AND INCOME	2016 \$000s	2015 \$000s
Government funds / grants and client fees		
Placement & support	44,277	46,279
Family services	34,247	29,006
Community programs	10,518	9,183
Mental Health & Disability Services	4,727	4,253
Parish partnerships & community development	702	765
Funds raised by Anglicare Victoria		
Tied fundraising income	2,682	2,317
Untied fundraising income	2,852	2,732
Net contribution from Innovative Resources	21	24
Bequests	474	178
Net investment income	3,585	2,818
TOTAL REVENUE AND INCOME	104,085	97,555

EXPENDITURE

Services provided to children, young people & families		
Placement & support	49,726	49,493
Family services	30,354	25,326
Community programs	10,877	9,875
Mental Health & Disability Services	4,546	4,112
Parish partnerships & community development	2,327	2,379
Infrastructure, support and governance costs		
Quality assurance, audit & other legislative compliance costs	663	757
Property (rents & maintenance), vehicles & technology infrastructure	1,904	2,825
Staff wellbeing, advocacy and community relations		
Staff development and training	950	1,152
Research and advocacy	560	574
Building relationships with community, schools, parishes and media	1,999	2,123
TOTAL EXPENDITURE	103,906	98,616

Net operating surplus / (deficit)	179	(1,061)
Grant to Anglicare Victoria Childrens Foundation	(464)	(34)
Gain on Merger with St Luke's	-	1,782
St Luke's Merger Costs	-	(60)
Net gain on sale of property, plant, equipment & investments	1,542	4,940
Impairment losses on investments (AASB 139)	(284)	(43)
Plant and equipment expensed	(26)	(446)
Heritage claims and redress costs	(827)	(209)
SURPLUS FOR THE YEAR	120	4,869

Other comprehensive income

Items that may be reclassified subsequently to surplus or deficit

Unrealised (loss) on investments	(804)	(911)
Other comprehensive income/ (loss) for the year	(804)	(911)
TOTAL COMPREHENSIVE INCOME / (LOSS) FOR THE YEAR	(684)	3,958

REPRESENTED BY

	2016 \$000s	2015 \$000s
Operating activities		
Provision of direct services to children, young children and families, including infrastructure and support services	(8,781)	(6,599)
Non-operating activities		
Net gain on sale of property, plant, equipment & investments	1,542	4,940
Impairment losses on investments (AASB 139)	(284)	(43)
Plant and equipment expensed	(26)	(446)
St Luke's merger costs	-	(60)
Heritage claims and redress costs	(827)	(209)
Anglicare Victoria's contribution of resources		
Net fundraising income	4,880	4,300
Net investment income	3,585	2,818
Net contribution from Innovative Resources	21	24
Bequests received	474	178
Grant to Anglicare Victoria Childrens Foundation	(464)	(34)
Other comprehensive income		
Unrealised (loss) on investments	(804)	(911)
TOTAL COMPREHENSIVE INCOME / (LOSS) FOR THE YEAR	(684)	3,958

STATEMENT OF FINANCIAL POSITION AS AT 30 JUNE 2016

ASSETS	2016 \$000s	2015 \$000s
Cash and cash equivalents	10,523	8,112
Other financial assets	4,304	2,512
Trade and other receivables	2,896	2,562
Inventories	261	309
Total Current Assets	17,984	13,495
Investments	26,071	29,587
Property, plant and equipment	18,337	17,539
Intangible assets	2,139	1,467
Total Non-Current Assets	46,547	48,593
TOTAL ASSETS	64,531	62,088

LIABILITIES

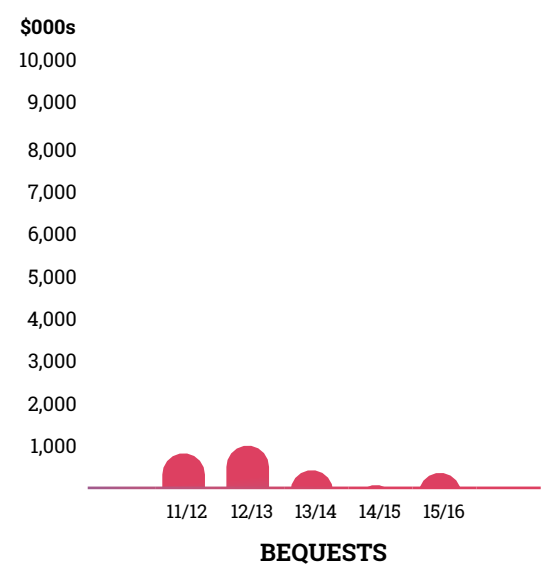
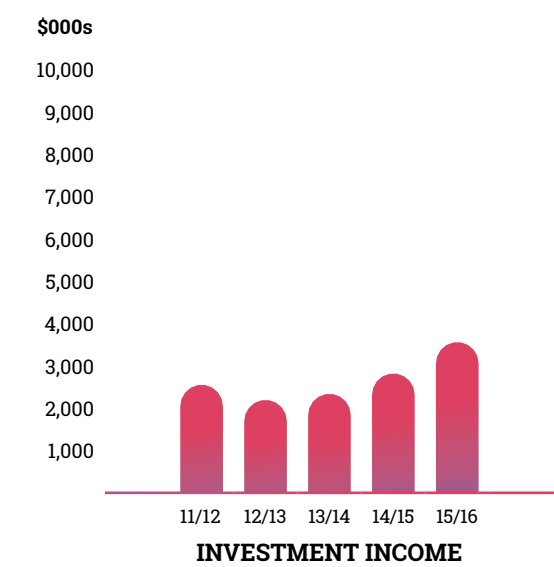
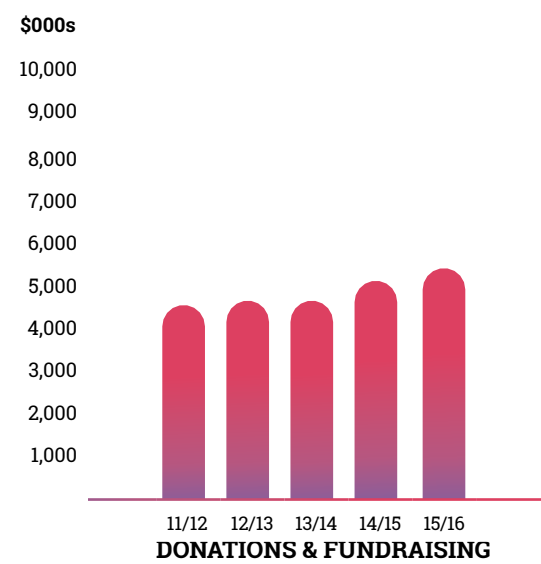
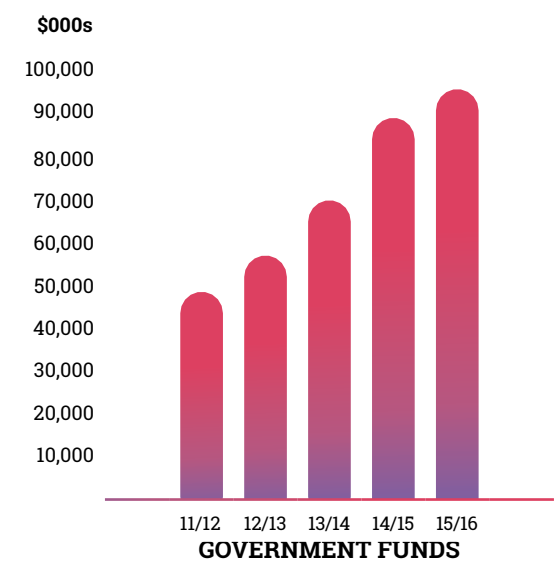
Trade and other payables	5,307	5,323
Provisions	580	200
Employee benefits	10,867	9,565
Deferred income	8,554	7,150
Total Current Liabilities	25,308	22,238
Employee benefits	846	789
Deferred income	650	650
Total Non-Current Liabilities	1,496	1,439
TOTAL LIABILITIES	26,804	23,677
NET ASSETS	37,727	38,411

EQUITY

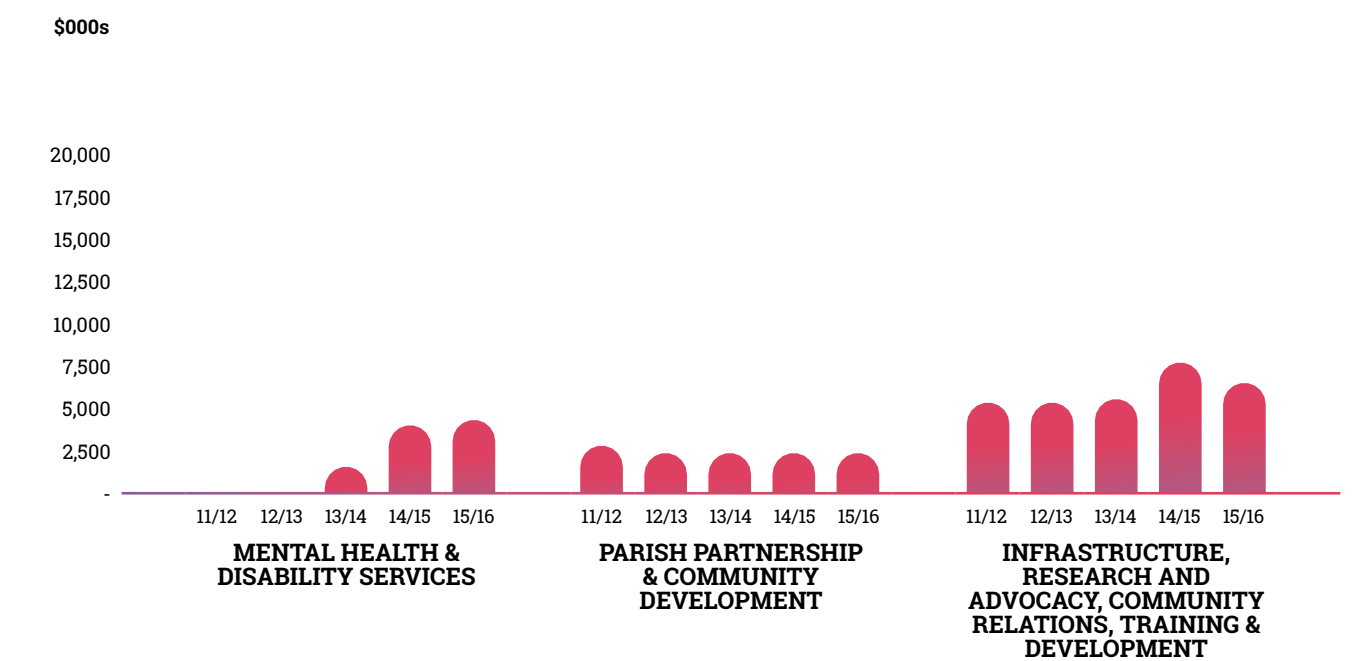
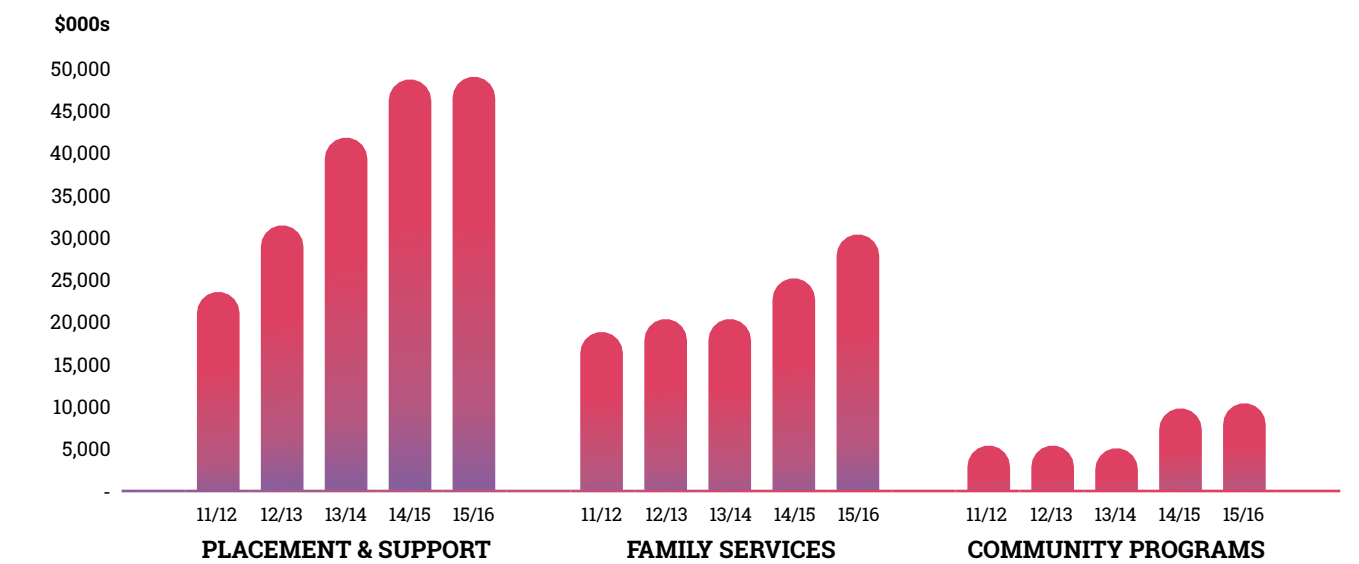
Establishment corpus	23,767	23,767
Reserves	17,120	16,519
Accumulated (losses)	(3,160)	(1,875)
TOTAL EQUITY	37,727	38,411

OUR FINANCIALS

REVENUE AND INCOME	2011/12 \$000s	2012/13 \$000s	2013/14 \$000s	2014/15 \$000s	2015/16 \$000s
Government funds	47,996	56,137	69,100	89,486	94,471
Donations and Fundraising	4,544	4,701	4,854	5,073	5,555
Investment income	2,688	2,246	2,488	2,818	3,585
Bequests	998	1,094	542	178	474
TOTAL	56,226	64,178	76,984	97,555	104,085



SERVICES PROVIDED TO CHILDREN, YOUNG PEOPLE & FAMILIES	2011/12 \$000s	2012/13 \$000s	2013/14 \$000s	2014/15 \$000s	2015/16 \$000s
Placement & support	23,670	31,548	42,133	49,493	49,726
Family services	19,168	20,038	20,266	25,326	30,354
Community programs	5,711	5,276	5,110	9,875	10,877
Mental Health & Disability Services	-	-	1,400	4,112	4,546
Parish partnerships & community development	2,690	2,383	2,357	2,379	2,327
Infrastructure, research and advocacy, community relations, training and development	5,235	5,210	5,786	7,431	6,076
TOTAL	56,474	64,455	77,052	98,616	103,906



OUR DONORS, SUPPORTERS & FUNDRAISERS

Anglicare Victoria's 1,300 staff and 2,000 volunteers could not achieve what they do without the philanthropy of numerous supporters who have made donations, volunteered their time, love and resources; or who simply participated in our events to raise funds.

For as little as \$30, we can help match a child with a foster carer. For just \$75, an abused child's counselling session is covered. A \$150 donation pays for one day's residential care. It doesn't take much and we urge all Victorians to follow the lead of supporters like:

- The 500 guests, 20 Melbourne chefs, and entertainers at our annual 'Gastronomique' gala dinner who helped raise much needed funds for Victorian children living in foster care.
- Our 80 'Altitude Shifters' who raised another \$85,000 for children in foster care by stepping outside their comfort zone and abseiling 113-metres down the St James Building in Melbourne. These included Australian soprano and actress Marina Prior, 83-year-old Jean Young, and teams from regional Victoria.

- Sirena Tuna, who donated more than one million cans of tuna to help feed struggling families and individuals across Victoria during the height of the 2016 winter.

These three examples also garnered significant media coverage. This highlights the very important role that such events play in promoting our purpose throughout the community. In turn, it helps attract even more support and much-needed funds to achieve our strategic goals.

On the following pages you will see listed many more individuals, charitable trusts, organisations and other supporters to whom we are beholden and eternally grateful to. Thank you all, and to the many others we simply don't have room to list in this report.



THANK YOU ALL

We also acknowledge the many significant contributors to our work during the financial year whose generous gifts enable us to trial innovative new programs and to invest further in proven existing programs, generating better outcomes for our clients:

Trusts & Foundations

The Angel Fund Pty Ltd
Barrett Family Trust
Bayley Foundation Pty Ltd
Bell Charitable Fund
Beverley Jackson Foundation
Bob & Emma House Foundation
Brian M Davis Charitable Foundation
Collier Charitable Fund
Community Services Trust
Dimmick Charitable Trust
Douglas & Phillip Young Charitable Trust
The Dyson Bequest
Equity Trustees Limited
Flora & Frank Leith Charitable Trust
Freemasons Public Charitable Foundation
George Hicks Foundation Limited
Guthrie Family Charitable Trust
Hanlon Foundation
Herbert & Dorothy Lancaster Charitable Trust

The Hugh D. T. Williamson Foundation
The Ian Potter Foundation
The Jack Brockhoff Foundation
Joan & Peter Clemenger Foundation
Joe White Bequest
Kilwinning Nominees Pty Ltd
The Kimberley Foundation
Legal Services Board
Lord Mayor's Charitable Foundation
Louis & Lesley Nelken Trust Fund
Marian & E.H. Flack Trust
Mavis & Bill Jennings Foundation
Meg & Frank Sims Fund
Newsboys Foundation
Perpetual Trustees
Peter Isaacson Foundation
Prescott Family Foundation
The Queen's Fund
The R E Ross Trust
Rosskim Pty Ltd
Russell Foundation
Sidney Myer Fund
Tyler House Trust
United Way Ballarat
Walter Campbell Memorial Trust
Walter & Eliza Hall Holdings Trust
Ward-Ambler Foundation
Whykes Family Trust
William Angliss (Victoria) Charitable Fund
The Will & Dorothy Bailey Charitable Gift
The Yulgilbar Foundation

Bequests & Estates

A G Birch Trust
Annette Marie McWaters Estate
Barbara Frances Sutton Estate
Barbara Mary Fleming Estate
Beryl & Lloyd Collins Perpetual Charitable Trust
Clifton John Oman Estate
Dudley Barton Adams Estate
Edmund George Barker Estate
Edna C Curwen-Walker Charitable Trust
Ethel Winifred Boggon Estate
Florence & Melville Hughes Trust
Frank & Sybil Richardson Charitable Trust
Frederick Shepherd Trust
Frederick William Roper Trust
G F Matthews Estate
Grace & Herbert Foulkes Charitable Trust
Graham George Harris Estate
Henry Ernest Bryant Estate
Irene Clare Hicks Estate
Jean Margaret Jukes Estate
John Etkins Estate
Joyce Courtney Hansen Estate
Kathleen Louisa Curwen-Walker Charitable Trust
L I Roach Estate

Lady April Felicity Hamer Estate
Lily Maude Payne Charitable Trust
Llewellyn Evans Testamentary Trust – C of E Bodies Fund
Margery Elma Kean Estate
Marjorie Champion Estate
Marjorie Isobel Ford Estate
N J Horton & Grace Horton Charitable Fund
N J Horton Charitable Fund
Suzanne De Villier Bosisto Estate
Tivey Memorial Fund
Trevor Watts Estate
Tweeddale Family Charitable Gift
Walter Appleby Estate
Walter Hamblin Estate
William Malcolm Bradford Estate

Businesses

101 Collins Street
333 Collins Street
AccessPay
Achievement Cleaning Services Pty Ltd
AGL Energy Limited
Aldi, Ballarat
Aldi, Wangaratta
Alerton Australia
Alward Holdings
Australian & New Zealand Banking Group
Atlantis Fire & Safety Services
ADF Defence Force School of Signals, Watsonia
Bakers Delight, Wangaratta
CGU Insurance
Darley Australia Pty Ltd
Department of Environment, Land, Water & Planning
Fleet Partners
Global Rental & Leasing
The Good Guys, Niddrie
ICONIC Food Distribution Group
Ledar Group
Mars Chocolate Australia
McKean Park Lawyers
Mercer Australia
MLC Limited
Mulnot Pty Ltd
My Little Patch
National Australia Bank Limited
Optus
P S & C Pty Ltd
RACV, Ringwood
Radio Ballarat Pty Ltd
Second Bite Program, Wangaratta
Sirena Tuna
Wangaratta RSL
Whitbread Insurance Brokers
Wolters Kluwer
Woolworths, Wangaratta

Schools

Ballarat and Clarendon College
Ballarat High School
Ballarat Secondary College – Barkly Campus
Ballarat & Queen's Anglican Grammar School
Boroondara Park Primary School
Brighton Grammar School
Camberwell Girl's Grammar Junior School
Caulfield Grammar School – Caulfield Campus
Geelong Grammar School
Highview College Maryborough
Hume Anglican Grammar
Ivanhoe Grammar School – Buckley House
Kardinia International College
Korowa Anglican Girls' School
Loreto College Ballarat
Lowther Hall Grammar School
Melbourne Girls' Grammar – Merton Hall
Melbourne Grammar School
Mentone Girl's Grammar School
Mentone Grammar School
St Patricks College Ballarat
Trinity Grammar School
Warringa Park School

Churches & Auxiliaries

All Saints' Anglican Church Rosebud
All Saints' Anglican Church St Kilda East
All Saints' Anglican Parish of Newtown/Geelong West
All Souls' Anglican Church Sandringham
All Souls' Anglican Church Sandringham Opportunity Shop
Anglican Diocese of Ballarat
Anglican Diocese of Bendigo
Anglican Diocese of Gippsland
Anglican Diocese of Melbourne
Anglican Diocese of Wangaratta
Anglican Parish of Altona/Laverton
Anglican Parish of Ararat
Anglican Parish of Beaufort & Skipton
Anglican Parish of Bendigo North
Anglican Parish of Box Hill
Anglican Parish of Buninyong
Anglican Parish of Colac
Anglican Parish of Corner Inlet Foster Opportunity Shop
Anglican Parish of Gisborne
Anglican Parish of Glenelg Wannon
Anglican Parish of Hamilton
Anglican Parish of Horsham
Anglican Parish of Kangaroo Flat
Anglican Parish of Kowree
Anglican Parish of Leongatha Opportunity Shop
Anglican Parish of Lower Glenelg
Anglican Parish of Mortlake
Anglican Parish of Oakleigh
Anglican Parish of Ocean Grove with Barwon Heads

Anglican Parish of Ormond
Anglican Parish of Port Fairy
Anglican Parish of Sebastopol
Anglican Parish of Sorrento and Rye
Anglican Parish of Spring Mount
Anglican Parish of St Agnes' Black Rock
Anglican Parish of St George's Ivanhoe East
Anglican Parish of St Mark's Templestowe
Anglican Parish of St Philip's Mt Waverley
Anglican Parish of St Stephen's and St Mary's Mt Waverley
Anglican Parish of Stawell
Anglican Parish of The Otways
Anglican Parish of Wandin/Seville & Mt Evelyn
Anglican Parish of Wandin/Seville & Mt Evelyn Golden Opportunity Shop
Anglican Parish of Warracknabeal
Anglican Parish Of Warrnambool
Anglican Parish of West Moorabool
Anglican Parish of West Wimmera
Anglicare Victoria Camberwell Auxiliary
Anglicare Victoria Eltham Auxiliary
Anglicare Victoria Rosanna Auxiliary
Anglicare Victoria Vermont Auxiliary
BICCY'S Opportunity Shop Supporters Inc (Brighton Inter-Church Council)
Christ Church Cathedral Ballarat
Church of the Ascension Anglican Church Burwood East
Epicentre Opportunity Shop Echuca
Holy Nativity Anglican Church Hughesdale
Holy Trinity Anglican Church Doncaster
Holy Trinity Anglican Church East Melbourne
Holy Trinity Anglican Church Hampton
Holy Trinity Anglican Church Kew
Holy Trinity Anglican Church Surrey Hills
Holy Trinity & Emmanuel Anglican Parish Oakleigh
Holy Trinity Anglican Parish Williamstown
Parish of Hamilton Uniting Church
St Aidan's Anglican Church Strathmore
St Andrew's Anglican Church Brighton
St Andrew's Anglican Church Brighton Opportunity Shop
St Andrew's Anglican Church Corio/Norlane
St Barnabas' Anglican Church Balwyn
St David's Dairy Fitzroy
St Dunstan's Anglican Parish Camberwell
St Faith's Anglican Church Glen Iris
St George's Anglican Church Travancore
St George's Anglican Church Malvern
St Hilary's Kew & St Silas Anglican Church Balwyn North
St James' Anglican Church Glen Iris
St John's Chrysostom Anglican Church Brunswick West
St John the Baptist Anglican Church Studfield
St John's Anglican Church Blackburn
St John's Anglican Church Bentleigh
St John's Anglican Church Camberwell
St John's Anglican Church Soldiers Hill

St Jude's Anglican Church Timboon
St Margaret's Anglican Church Eltham
St Mark's Anglican Church Forest Hill
St Mark's Anglican Church Fitzroy
St Mark's Recycled Collingwood
St Mary's Anglican Church Cobden
St Mary's Anglican Church North Melbourne
St Mary's Anglican Church Sunbury Community Store
St Matthew's Anglican Church Cheltenham
St Matthew's Anglican Church Wendouree
St Matthias' Anglican Church Richmond North
St Oswald's Anglican Church Glen Iris
St Paul's Anglican Church Ballarat
St Paul's Anglican Church Canterbury
St Paul's Anglican Church Camperdown
St Paul's Surprise Shop Inverleigh
St Peter's Anglican Church Ballarat
St Peter's Anglican Church Brighton
St Peter's Anglican Church Murrumbena
St Peter's Eastern Hill East Melbourne
St Peter's Ladies' Guild Leongatha
St Philip's Anglican Church Collingwood
St Silas & St Anselm Anglican Church Albert Park
St Stephen's Anglican Church Gardenvale
St Stephen's Uniting Church Williamstown North
Toorak Opportunity Shop
Uniting Church Wangaratta
Wangaratta Lutheran Church
Wangaratta Lutheran Opportunity Shop
Wangaratta Presbyterian Church Ladies Guild
Williamstown Uniting Church in Australia

Community

Centrelink Community Engagement Team
Gateway Community Services
Lions Club of Dromana Inc
Lions Club of Mooroolbark Inc
Lions Club of Oakleigh Inc
Lions Club of Rosebud Inc
Lions Club of Rye Inc
Military & Hospitaller Order of Saint Lazarus of Jerusalem
Nillumbik Shire Council
Rotary Club of Albury
Rotary Club of Bright
Rotary Club of Clayton
Rotary Club of Dromana
Rotary Club of South Ballarat
Share the Dignity
Southern Peninsula Community Fund Inc
St John of God Health Care
Pinelodge Clinic
Street to Home Community Outreach Services
UFS Pharmacies, Bendigo
Williamstown Library
Yarra Ranges Shire Finance Dept
Zanners Netball Club



OUR ENTREATY

Please help us make better tomorrows
Here are some of the ways you can help in 2017:



DONATE to our fundraising appeals online at anglicarevic.org.au or call 1800 809 722.

BECOME A CARER and provide a stable, loving home for foster care children who are unable to live with their birth families. Information sessions are advertised on our website.

GIVE REGULARLY and provide ongoing funding through regular monthly donations.
Call 1800 809 722.

GIVE AT CHRISTMAS and get involved with our annual Christmas Toy & Food Appeal. Giving to us during= this seasonal occasion will bring joy to children by way of a gift, and help contribute to a family meal on Christmas day.

Leave your donations under the Christmas tree at 101 Collins Street, Melbourne or phone us to arrange a collection.

LEAVE A LEGACY and remember Anglicare Victoria when you are planning your estate and arranging your Will. Your bequest funds can go to our organisation as a whole, or we can ensure your gift goes to support a program of your choice. Speak with our Relationships Manager Bequests to find out how you can contribute to make a lasting and valued impact.
Call 03 9412 6197.

VOLUNTEER and become an appreciated member of the Anglicare Victoria team. Please visit our website to view the volunteering positions that are currently available.

GET SOCIAL and keep in contact with the work we do, by following us on Twitter, liking us on Facebook, or sharing our YouTube videos.

TALK WITH US and find out more about our programs that coordinate giving projects with business leaders, workplace groups and staff social clubs through sponsorship, workplace giving or corporate volunteering.

NETWORK with like-minded supporters of Anglicare Victoria at events such as our annual gala "Dinner with the Angels" event and scale the heights of giving with our fundraiser "Altitude Shift".

JOIN OUR TEAM because Anglicare Victoria is always keen to meet people who would like to work with us. All career opportunities are advertised on our website.

FOR MORE HELPFUL INFORMATION ABOUT THE WAYS YOU CAN BRING ADDED VALUE TO OUR WORK IN THE COMMUNITY, PLEASE CONTACT OUR TEAM ON **03 9412 6133** OR VISIT OUR WEBSITE **ANGLICAREVIC.ORG.AU**

OUR OFFICES

Central Office Collingwood 103 Hoddle Street Collingwood VIC 3067 Tel: 03 9412 6133	Northern Region Broadmeadows 32 Railway Crescent Broadmeadows VIC 3047 Tel: 03 9301 5200 Craigieburn 59 Craigieburn Road Craigieburn VIC 3064 Tel: 03 9483 2401 Plenty Valley 8 Hurtle Street Lalor VIC 3075 Tel: 03 9465 0322 Preston 42 Mary Street Preston VIC 3072 Tel: 03 8470 9999	Gippsland Region Bairnsdale 347 Main Street Bairnsdale VIC 3875 Tel: 03 5152 1213 Leongatha 5a Church Street Leongatha VIC 3953 Tel: 03 5662 4561 Morwell 65 Church Street Morwell VIC 3840 Tel: 03 5133 9998 Morwell 162 Commercial Road Morwell VIC 3840 Tel: 03 5135 9555 Warragul Suite 2 3 Barkly Street Warragul VIC 3820 Tel: 03 5622 8600	Innovative Resources 62 Collins Street Kangaroo Flat VIC 3555 Tel: 03 5446 0500 Eaglehawk 9 High Street Eaglehawk VIC 3556 Tel: 03 5430 1200 Albury 442 Swift Street Albury NSW 2640 Tel: 02 6058 6500 Deniliquin Deniliquin Arcade 344-356 Cressy Street Deniliquin NSW 2710 Tel: 02 5881 7086 Echuca Heygarth Street Echuca VIC 3564 Tel: 03 5482 0900 Kyneton 1 Victoria Street Kyneton VIC 3444 Tel: 03 5421 2000
Southern Region Pakenham 66-68 Main Street Pakenham VIC 3810 Tel: 1300 984 011 Rosebud 1703 Point Nepean Road Rosebud West VIC 3939 Tel: 03 5986 9900 Dandenong 15 Scott Street Dandenong VIC 3175 Tel: 03 9706 8568	Western Region Broadmeadows Women's Community House PO Box 258 Dallas VIC 3047 Tel: 03 9309 9433 Sunshine Cnr Anderson Road & Sun Crescent Sunshine VIC 3020 Tel: 03 9334 1203 Werribee 2 Market Road Werribee VIC 3030 Tel: 03 9731 2500 Yarraville 41 Somerville Road Yarraville VIC 3013 Tel: 03 9396 7400	St Luke's Region Family & Child Services 175-187 Hargreaves Street Bendigo VIC 3550 Tel: 03 5440 1100 Youth Services Youth Central 10 Mundy Street Bendigo Vic 3550 Tel: 03 5434 3922 Community Programs 47 High Street Bendigo VIC 3550 Tel: 03 5448 1000	Maryborough 93 Clarendon Street Maryborough VIC 3465 Tel: 03 5460 4144 Swan Hill 62 McCallum Street Swan Hill VIC 3585 Tel: 03 5036 3200 Mildura 136 Lime Street Mildura VIC 3502 Tel: 03 5051 0050

In 2015/2016, the broadmeadows site underwent a significant upgrade with the construction of a two storey building. The building was sponsored by the board property committee, and was designed to meet the current and future needs of our staff and clients. The project was completed on time and below budget.
Garry Dalton, General Manager – Infrastructure



This annual report is printed on Pacesetter Laser Pro. It is FSC Mix Certified, which ensures that all virgin pulp is derived from well-managed forests and controlled sources. It is manufactured by an ISO 14001 certified mill.

