



Annual Report 2005/06



supporting families, building communities
through every stage of life...

It gives me great satisfaction to see the generosity of a range of people in the local community.



'I have been volunteering at the Lazarus Centre for the homeless for eight years now. I started because I just wanted to be involved in helping others. Every day I spend at the Centre is special and makes me proud.'

Ken McCarthy, volunteer with the Lazarus Centre



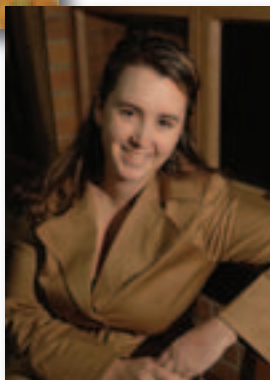
'I first became interested in volunteering at Anglicare's Emergency Relief Centre in Lilydale through my local church who supported the program. It gives me great satisfaction to see the generosity of a range of people in the local community.'

Marion Mackie, Anglicare Emergency Relief Volunteer



'I enjoy helping out in whatever way I can. Many of the clients here are lovely people and if they are in great need we try to give them a bit extra. I like the Anglicare staff here – they let us get on with the job of helping the clients.'

Sandra Cracknell, Anglicare Emergency Relief Volunteer



'I volunteer to do this work because I enjoy working with children. My proudest moments are simply having fun with the kids. I like to bring an educational perspective to working with the children to offer more than just respite for parents and carers.'

Helen Salter, volunteer with the Anglicare Friends program

Contents

From Melbourne's Bishop Administrator	4
Our Year in Review	5
Chairman's Report	6
CEO's Report	8
The Best Start Possible – Our Work with Children	10
Achieving Their Full Potential – Our Work with Young People	12
Help When it's Needed Most – Our Family and Community Programs	14
Those That Help Make it Happen	16
Our Year in Pictures	18
Parish Partnerships and Community Development	20
Celebrating our Volunteers	21
Area Highlights	22
Fundraising	26
Major Contributors	28
New Organisational Structure	29
Council, Board, Senior Management and Committees	30
Financials	32
Directory	34
How You Can Make a Difference	35

From Melbourne's Bishop Administrator



Anglicare Victoria's 2005/06 Annual Report celebrates the vital work being done by the Agency in supporting families and building communities through every stage of life.

From giving children the best possible start, to helping young people reach their full potential, to working with families to provide support where it is most needed – Anglicare Victoria helped many thousands of vulnerable Victorians last year.

Anglicare Victoria plays a vital role in supporting the growing number of children, young people and families in our Diocese who are marginalised and in great need.

With the invaluable assistance of supporters and local parishes, Anglicare Victoria provided assistance to more than 50,000 people last year.

Through the provision of safe and loving homes for neglected and abused children, intensive support for young people in crisis, emergency relief for families living in poverty, or one of dozens of other services, Anglicare Victoria's work is helping to build stronger communities for us all.

I am confident that Anglicare Victoria will, in Christ's name, continue to meet the challenges of providing hope and support to the most vulnerable in our communities, regardless of their stage of life, and that the Agency will do so with generosity and compassion.

I commend to you this Annual Report and the work of Anglicare Victoria and its people.

A handwritten signature in black ink, which appears to read "John Wilson".

The Right Reverend Dr John Wilson

Our Year in Review

Our Services	Highlights of 2005/06	Initiatives for 2006/07
Placement and Support	<ul style="list-style-type: none"> • Coordinated 2,563 foster care and 88 permanent care placements for children. • A total of 130,804 days of care were provided to children and young people in Victoria. • Developed a new model of Foster Care service delivery. • Supported 335 young people through adolescent foster care and residential care. • Developed a new model for the delivery of Residential Care services. • Provided intensive support to 1,531 young people. 	<ul style="list-style-type: none"> • Commence trial of the new model of Foster Care in Melbourne's northwestern suburbs. • Implement the new Residential Care model.
Family Services	<ul style="list-style-type: none"> • Intensive support for 3,543 families at risk of breakdown. • Alcohol, drug abuse and family violence programs assisted 2,221 people. A further 10,048 families received parenting advice or other vital support. • Consulted and developed submissions in response to the Exposure Drafts of the <i>Children, Youth and Families Act</i> and the <i>Child Wellbeing and Safety Act</i>. • Input into the State Government White Paper <i>Protecting Children: the Next Steps</i>. • Contributed to the development of the State Government's new Strategic Framework and Standards for Family Services. 	<ul style="list-style-type: none"> • Professional Practice Forums and staff training and development to focus on the delivery of client services within the spirit of new State Government legislation.
Community Services	<ul style="list-style-type: none"> • Financial Counselling was provided to 4,822 people. • Community development activities supported local communities and cultural and Indigenous groups. • 1,042 volunteers provided 57,856 hours of support. • Advocated on behalf of those in the community disadvantaged by social and economic policy. 	<ul style="list-style-type: none"> • Establish Professional Practice Forums to support staff. • Continue to advocate for isolated and disenfranchised client groups. • Resource and support new community development initiatives.
Parish Partnerships and Community Development	<ul style="list-style-type: none"> • Emergency relief was provided to 37,636 people. • New emergency relief sites established at Sunshine, Keilor and Craigieburn. • New Parish Partnerships in Sunshine and Box Hill. • Establishment of Parish Partnership Steering Committee for the Diocese of Gippsland. 	<ul style="list-style-type: none"> • Establish new partnership in the Diocese of Ballarat. • Establish new emergency relief sites in St Albans and Sydenham Parishes. • Commence a new Refugee Support Service in Melbourne's eastern suburbs. • Develop stronger links to parishes in the Diocese of Gippsland.

Chairman's Report



Each year Anglicare Victoria faces new and fresh challenges. This year has seen the Board commit \$2 million to the building of a new Family Centre at Lilydale and a further \$3.1 million on a new Central Office in Collingwood. We appreciate the support of the Victorian Government in providing \$580,000 and the Helen Macpherson Smith Trust in providing \$100,000 towards the Lilydale project. Funds from the sale of surplus properties have enabled the Board to finance the new Central Office as part of the Agency's strategic direction for the next three years. The office will house not only our Senior Management Team members but also Finance, Corporate Services, Client Information, Social Policy and Research, Professional Development and Community Services.

A major review of our management and administrative structures was completed during the year. This saw the appointment of eight new Area Managers and General Managers to cover Placement and Support Services, Family Services, Parish Partnerships and Community Development and Gippsland.

The new Area Managers cover the following areas: Box Hill, Broadmeadows, Knox, Frankston, Gippsland, Preston, Werribee and Yarra Ranges. A restructure is never easy and I wish to express the Board's appreciation to the staff for the way this was carried out. Whilst most staff have been retained, a small number have moved to new positions with other organisations. The changing demands in service delivery will continue to mean that as new programs are implemented others may be discontinued. Senior Management and the Board seek to be sensitive to the needs of staff during these processes and have put in place policies to ensure that the organisation acts within its Charter.

The new structure will position Anglicare Victoria more effectively in an ever-changing and competitive environment.

The Board is conscious of its role as an agent of God's love for those in the community who need support.

The Board is conscious of its role as an agent of God's love for those in the community who need support. With this mission in mind, the 2006/07 Budget projects an operating deficit of \$780,000 with a large commitment to upgrading our residential care work.

Additional work is also being undertaken to improve our service delivery in foster care.

The Board conducted its annual retreat and planning day in February 2006 when Dr David Green led a major discussion on the future of agencies such as Anglicare Victoria and the complications of partnering with Government. This raised a number of issues including the role of partnering with other agencies in service delivery, quality assurance issues and other regulatory matters. These issues continue to be on the Board's ongoing agenda.

During the year, the Board met on eleven occasions with additional regular meetings of the Research Ethics, Social Policy and Finance Committees. A new Audit Committee was established, Chaired by Board member Ms Sue McCarthy. Dr Lynda Campbell resigned from the Board during the year after nine years service and we welcome Dr Winsome Roberts. A special dinner was held to

recognise Dr Campbell's contribution.

The work of the Board is encouraged by the many donors, volunteers and supporters who continually provide time and money for our work and we express our deepest thanks to them for their commitment.

The support of both the Commonwealth and State Governments is also appreciated, as is the ongoing support from local Councils.

The Board looks forward to the challenges in the weeks and months ahead with enthusiasm and confidence. As Chairman, I express my personal thanks to all members who give of their time freely. I hope they, like myself, receive satisfaction for their efforts.



Dr Graeme Blackman
Chairman

CEO's Report



Anglicare Victoria is a major provider of community services in Victoria. As part of the Anglican Church's mission in Australia, we provide a range of services to children, young people and families. Formed in 1996, with the coming together of three welfare organisations within the Diocese of Melbourne, Anglicare Victoria today employs 627 staff and is supported by over 1600 volunteers. Our range of support services include emergency relief, family counselling, disability programs, financial counselling, out of home care, drug and alcohol programs, child protection and a range of locally-based parish community services. At a time of unprecedented growth in Australia the demands for our services are at a record level.

This 2005/06 Annual Report tells a number of our stories and reflects the dedication and

commitment of all our staff and volunteers as they strive to bring hope to all who are facing difficulties and challenges in their life.

The foundations of our work are embedded in the scripture and tradition of the Christian Church. The prophets of the Hebrew Scriptures call on all who exercise leadership to act justly and responsibly and to ensure 'the widow and orphan' are cared for and supported. The parables of the Good Samaritan and the Prodigal Son tell of divine providence and the call to be generous and to act with mercy towards our neighbour. Our primary aim is to offer opportunities for personal and social transformation to children, young people and families who find life a struggle. We seek to do this by exemplary service practice, advocacy, education and research. Our goal is to value add to the lives of individuals and communities by living out in word and deed the noble Christian vision of a just and compassionate community, where all have access to the basic needs of human life - housing, strong personal relationships and an adequate income.

We do not always get it right, nor can we always provide the level of support needed on our own. Like other agencies, we work in

Our primary aim is
to offer opportunities for
personal and social
transformation to children,
young people and
families who find life a
struggle.

partnership with Government and other community organisations. Nor is our advocacy always appreciated when we seek to share the life experiences of people in need. Helda Camira, one-time Catholic Archbishop in South America, once explained that when he fed the poor he was considered a saint, but when he advocated for their rights he was called a communist.

Australian society is rapidly changing.

As an agency drawn from the Christian faith, we have an obligation to maintain our focus, and to ask, 'What does it mean to be human in the 21st century?' It means respecting the dignity and rights of all children and families and particularly the disadvantaged. With this agenda in mind, the Board of Anglicare Victoria has completed a major review of our residential care programs and agreed to provide, with the support of a major benefactor, a further \$1.1million to this program over the next three years in order to provide not just accommodation but a program offering enrichment for young people needing care away from their families. Likewise, our Foster Care programs are being re-shaped due to a significant private donation and additional Government funds.

We continue to expand our child protection work in cooperation with the Department of Human Services and other agencies. These initiatives, along with our Parish Partnerships, aimed at promoting and expanding local services, illustrate our commitment to building a just community.

None of our work would be possible without the support of dedicated staff and volunteers and the generous giving in both time and money from all sections of the community. The Federal and State Governments continue to provide us with significant funds with the Victorian Government advancing the care of children with the introduction of the *Working with Children Bill* and the *Children, Youth and Families Act*.

Together, with both a political and community will, we can all work to build a more just community and 'give a child a chance.'



Dr Ray Cleary
Chief Executive Officer

Our Work with Children

For a child to grow into a healthy adult their basic needs must be met in the early stages of development. While it may be difficult for some of the families who rely on Anglicare for support to meet these needs due to social and economic disadvantage, as a community we can work together to give all children the best start in life.

Having a secure and stable family environment increases a child's chance of a bright and prosperous future. In collaboration with our foster carers and the broader community, Anglicare continues to work towards giving all children the chance at a life free from poverty and disadvantage.

Our Programs

- ☐ **Foster Care** – home based care for children from birth to 12 years
- ☐ **Permanent Care and Adoption** – for children unable to return home
- ☐ **Residential Care** – for children unable to be placed in home based care
- ☐ **Kinship Support** – home based care within the family
- ☐ **Contact Centres** – access visits for birth families
- ☐ **Disability Support** – supports families caring for a child with an intellectual or physical disability
- ☐ **Homework Clubs** – educational support for the transition to secondary school
- ☐ **Mentoring** – positive adult role models
- ☐ **Parent Education** – information and resources for parents

Statistical Highlights 2005/06

- ☐ We coordinated 2,563 foster care and 88 permanent care placements for children.
- ☐ Anglicare Victoria staff coordinated a total of 130,804 days of care.
- ☐ Foster care was provided through the support of 638 foster carers.
- ☐ 366 families who have a child with a disability accessed our disability support programs.
- ☐ We supported 901 children through childcare, after school care or vacation care.

The Best Start Possible



Kathryn Ryan (right), pictured with Tracie and Bethany, participants in the Bookwormz Playgroup at Yarraville

Anglicare's Choices Parenting Support program assists young parents and their children in Melbourne's north-west region. Many of the parents in the program have not had the benefit of good role models when they were growing up, have experienced abuse and have spent time in out of home care.

Kathryn Ryan has been a volunteer with the program for the past two years. She co-ordinates the weekly playgroup for the children and is also involved in the mentoring program which provides young mothers with an opportunity to meet socially with experienced parents.

'The young women need to be in an environment that is safe and comfortable, where they will not be judged. Raising children is a daunting task at the best of times, but can be even more difficult if you are dealing with added issues such as post-natal depression and social isolation.

The playgroup also gives the children an opportunity to take part in indoor and outdoor activities and to mix with other children which they may not normally have the chance to do. I like to describe what we do here as creative therapy. There are few services in the community that support new parents, even though nurturing children is one of the hardest and most vital roles anyone can have. My involvement has also been extremely valuable for myself. It is absolutely fascinating watching the children develop and grow.'

Our Work with Young People

Young people today are growing up in an increasingly complex and competitive world. Without strong family and community support many are at risk of homelessness, poverty and mental health problems.

Issues such as abuse and neglect, family breakdown, homelessness, social isolation and unemployment are among the many reasons young people turn to Anglicare for support.

Our Programs

- ❑ **Residential Care** – for young people 13 -18 seeking independence or not suited to home based care
- ❑ **Crisis Accommodation** – for homeless young people aged 16 years and over
- ❑ **Adolescent Community Placement** – home based care for young people 13 -18
- ❑ **Supported Accommodation** – for young people seeking independent living skills
- ❑ **Adolescent Support and Youth Mediation** – helping to resolve conflict
- ❑ **Alcohol and Drug Counselling** – to minimise risk-taking behaviours
- ❑ **Sexual Assault Counselling** – for victims of abuse
- ❑ **Young Parent Education** – support and skills development
- ❑ **Mentoring** – positive adult role models
- ❑ **Job Placement, Employment and Training** – providing young people with workplace skills
- ❑ **Juvenile Justice Group Conferencing** – to deter young people from entering the criminal justice system
- ❑ **Drop-in Centres** – access to information and support

Statistical Highlights 2005/06

- ❑ 1,531 young people were assisted through education, training, mediation, mentoring, supported accommodation and youth counselling during the year.
- ❑ 335 young people were supported through adolescent foster care or residential care.
- ❑ Programs specifically addressing alcohol and drug issues assisted 1,030 people.
- ❑ 101 young people were supported through other intensive support programs.

Achieving Their Full Potential



Anglicare's Gary Webb, pictured with participants in the Young Men's program

Gary Webb has been working as an Intensive Youth Support Worker with Anglicare's Co-ordination and Support Team in Preston for the past eight years. The program supports young people aged up to 18 years.

'All of our clients are classified as 'high risk' and have complex family issues including family breakdown, physical and emotional abuse and high rates of unemployment and generational disadvantage.

Our initial focus is always on a practical level such as trying to keep them at school or finding them a place to live. There is no point working on other issues if a young person is homeless. Once we have dealt with the immediate need we can then go on to provide support directed at addressing some of the reasons they have come to us in the first place.

Many young people just want someone to listen to them – an adult that will not judge them and can guide them in the right direction. Most of the young people who come to us have spent their entire lives without positive role models. They may initially lack motivation and the self esteem to improve their circumstances, but with the right support the vast majority are more than willing to make positive changes.

One of the most rewarding aspects of my work is when you see a life that has been turned around. I recently went out for a coffee with a past client that was in out of home care a couple of years ago. He is now 20 years old, employed full time in a supervisory role with a telecommunications company, has his own flat and is fully independent. It is just incredible to think how far he has come in the past five years.

Every young person, regardless of the obstacles they have faced in the past, has a strength or talent that they can develop with a bit of guidance and direction.'

Our Family and Community Programs

The key to supporting families is to strengthen the inter-connectedness of family and communities. This requires committed partnerships between community organisations such as Anglicare, State and Federal Governments and the wider community.

Despite over a decade of strong economic growth,

many families are missing out. Life has become more difficult for low-income families and those who rely on government support.

Families unable to adapt to a rapidly changing society are often at risk of experiencing poverty, domestic violence, homelessness, alcohol and drug abuse, unemployment and mental health issues.

Our Programs

Integrated Family Services – preventing family breakdown

In-Home Parenting Support – skills development and role modelling

Family Violence Programs – targeting both perpetrators and victims

After School and Vacation Programs – assisting children in developing social, recreational and learning skills

Financial Counselling – information and support for low-income earners

Gamblers Help – counselling and support for problem gamblers

Training and Support Groups – to reduce isolation and strengthen communities

Family Camps – for bonding, communication and skills development

Emergency Relief and Material Aid – for those struggling on low incomes

No Interest Loans – for low-income earners

Consumer Legal and Tenancy Support – advice regarding consumer rights

Homeless Support – food and outreach

Breakfast Clubs – to help children get the most out of their school day

Multicultural Groups – to reduce isolation and strengthen communities

Indigenous Support – assistance to Aboriginals and Torres Strait Islanders

Prison Chaplaincy – meeting the spiritual needs of prisoners and their families

Victims Assistance – for those suffering trauma

Refugee Services – support for new arrivals

Statistical Highlights 2005/06

- ❑ 3,543 families at risk of breakdown received intensive support from our family services workers during the year.
- ❑ Emergency relief was provided to 37,636 people.
- ❑ 4,822 people received support from Anglicare Victoria's Financial Counsellors.
- ❑ 1,191 men and women were assisted through our family violence programs.
- ❑ Parenting information and resources were provided to 6,429 people.
- ❑ Support was provided to 1,979 newly arrived refugees.

Help When it's Needed Most

Jan Tucker has been a volunteer with our Emergency Relief program in Lilydale for the past five years. She was a recent recipient of a Chairman's Award for her work in the program along with fellow volunteers, Sandra Cracknell and Marion Mackie.

'I initially became involved in the emergency relief program because I wanted to give something back to the community. I have healthy and well adjusted adult children and grandchildren to be thankful for and I wanted to do my bit to help where there was a need. Having raised six children myself, I know that it isn't easy when money is tight but when I raised my children things weren't as expensive as they are now. When I see what is going on today I have to rethink my own time raising a family. When you make a comparison you see that we didn't really have to struggle at all.

Working here has been a big learning curve. I had no idea there were so many people living in such desperate circumstances. Some of the stories you hear are heart-wrenching. The other day

a young boy came in and it wasn't until we asked him to fill in the form that we discovered not only was he homeless but he was unable to read or write. We also recently had a client who was overjoyed to tell us that he had finally found a place for his family to live - they had spent the past month sleeping in a bus shelter.

We receive a great deal of support from local churches and schools. One school spends a year organising their donation which comes from the school children bringing in non perishable food items. We have another local gentleman who grows vegetables to donate to us and a local orchard that donates fruit. Such a great deal is achieved by everyone working together to help out in whatever way they can.

The camaraderie among the volunteers and staff here is also a great bonus. We all have the same goal in mind - to do our bit to help those less fortunate.'



Anglicare Emergency Relief Volunteer, Jan Tucker



Maureen White and Doreen Stoves have provided care to children in their home for over 12 years. They originally became carers to ensure a group of three siblings were not separated when they required out of home care. They took on the permanent care of the children who are now in their early 20s.

I have spent my working life in the welfare field as I believe that stronger people in society need to care for those that are weaker because they have not had the same opportunities. Caring is a very rewarding experience. While it is only natural that you become attached to the children and it is difficult to see them go, that is made easier when you consider that it is in the children's best interests. You have a role to play while they are in your care and you are then giving a child an opportunity for another experience. *(Doreen)*

Over the years we have seen a much higher number of children requiring care due to drug problems within their family. Often in these situations, parents cease to be the people they once were and have little hope of adequately caring for their children. You need to go into foster care with your eyes wide open. It is a difficult job, but I have absolutely no doubt that it can change children's lives. Playing a part in turning kids lives around and helping them to become productive adults is what it is all about. *(Maureen)*



Antoniette Bonaguro has been working for Anglicare since 1998. She is currently the Werribee Area Manager.

I am fortunate to have a job that allows me to do work on the ground - dealing with real people and playing a part in making a difference to their lives.

I have had various roles since I started working with Anglicare. We now have more clients with complex needs and multiple issues such as drug and alcohol dependence, mental health issues and domestic violence. We also see many families in need of material aid, such as nappies for newborn babies and essential food items.

The staff are really committed to doing all that they can to provide for disadvantaged families. Our work is also made easier by the support of the organisation who allow us to be as flexible as we need to be to achieve the best possible outcomes for clients.

I am also encouraged by the support from community groups and parishes. One lady, for example, donates hand made dolls for children entering foster care. It may seem like only a small contribution to our work but it can make all the difference to a child in care who may not even have a toy of their own. When a community joins together, with each person playing a part, a great deal can be achieved.



BI-LO Supermarkets – along with Bunnings Warehouse – is an Anglicare Christmas Appeal sponsor. For the past four years BI-LO's supermarkets around Australia have prominently displayed and sold Anglicare Christmas Angel merchandise.

Since 2002, BI-LO stores in Victoria alone have sold \$250,000 in merchandise on behalf of Anglicare.

Our visible presence and the high customer traffic in BI-LO stores combine to lift the profile of Anglicare and our work with children as well as raising vital funds to support our work.

According to Coles Myer Supermarkets' Community Relations Manager, Ms Anna Greco, support for Anglicare's Christmas Appeal is part of the BI-LO Buddies community support program.

Through Buddies, we support organisations helping those in need in local communities. The partnership with Anglicare gives our staff a chance to help make a positive change to the lives of children living in care.

During the 2005 Christmas Appeal, BI-LO donated 30 cents from the sale of each BI-LO brand frozen chicken to Anglicare. The Appeal was launched in November when BI-LO staff competed against some of our celebrity supporters for the title of 'best turkey carver' in the Great Turkey Carve-Off at Southbank.'



Jenny Disney has supported Anglicare and the former Mission to the Streets and Lanes since the 1970's. As well as being a regular donor, she is also the President of the Anglicare Auxiliary in Eltham, Secretary of the Auxiliaries Central Council, Secretary of the Friends of Anglicare and a Council Member. She also supports us by co-ordinating the sale of merchandise and gives regular talks to community groups on our work.

I originally became involved through my local church where I got to see the way people were uniting together to support the work of the organisation and the great things that were being achieved with their combined efforts.

We can be complacent about our way of life when we have so much in terms of material possessions. Being involved with Anglicare helps us to see that not all people have the advantages we may have in life. As a society, we need to be thinking of what we can do for others instead perhaps of what we can do for ourselves.

As a donor, I have no hesitation to giving to the work of Anglicare. Through my various roles, I have been able to see first hand the vital work that is being done throughout the State and that money raised is being put to good use.

Our Year in Pictures



Top Left:
Over 200 people attended when our Chairman presented awards to staff and volunteers for their outstanding service at Anglicare's Annual Celebration Service.

Top Right:
Thirteen of Melbourne's finest Chefs volunteered their time to support the 'Dinner with the Angels' fundraising event in November.

Centre Left:
Bunnings team members bobbed for apples with groups from the local community as people came together to help launch the Christmas Appeal at various locations.

Centre Right:
Work on the redevelopment of our Lilydale Family Services Centre commenced in March.

Bottom Left:
Students from Grey Street Primary School in Traralgon helped us to launch the Winter Appeal in Gippsland in June.



*Top Left:
Well-known Melbournians David Brown, Andi Lew, Chella Gillet, Cindy Sargon and Jo Hall pack fruit for distribution to Anglicare Victoria's Mission House at the launch of our Winter Appeal.*

*Top Right:
Victorian Law Reform Commissioner Professor Marcia Neave delivered the inaugural Neale G Molloy Social Justice Lecture on 'Poverty and the Law' in October.*

*Centre Left:
The Victorian Bushrangers cricket team was a big hit with some of our young clients when they helped us to launch our Streets & Lanes Appeal in September.*

*Centre Right:
Jewellers and jewellery designers donated individually crafted items for auction at our Wearable Art Show in August to help raise funds for our work.*

*Bottom Left:
The Trinity Grammar School choir sang at the service to celebrate Anglicare Victoria's work.*

Through a range of partnerships with parishes throughout Melbourne and with the Diocese of Wangaratta, we provided emergency relief to 37,636 people during the year.

During 2005/06, Anglicare Victoria continued to work in collaboration with local communities to provide vital support to people in need.

This work took the form of partnerships with parishes and Dioceses with the aim of promoting and expanding local services.

Some highlights include the following:

- ❑ Through a range of partnerships with parishes throughout Melbourne and with the Diocese of Wangaratta, we provided emergency relief to 37,636 people during the year. This relief took many forms including food, clothing, toiletries, baby bundles, vouchers, help with back-to-school costs and disaster recovery.
- ❑ Three new emergency relief sites were established in areas of identified need at Sunshine, Keilor and Craigieburn during the year.
- ❑ Two new parish partnerships were established during the year at Sunshine and Box Hill. The Box Hill partnership will underpin our work with the Sudanese refugee community in Melbourne's eastern suburbs where we are in the early stages of establishing a Refugee Support Centre that will operate in a similar manner to the Centre operated in conjunction with the Anglican Parish of Footscray.



- ❑ The establishment of a Parish Partnership Steering Committee in the Diocese of Gippsland is the first step in developing stronger links to parishes in the Diocese and will benefit marginalised and vulnerable people in those communities.
- ❑ Our work with the Diocese of Wangaratta continues to go from strength to strength and as a result it was agreed that the partnership will be renewed for a further three years. Two exciting projects underway in the Diocese are the Yarrowonga Community Arts Workshops, which involved 153 children from six local primary schools and 53 volunteers since the beginning of the year, and the Parish of Beechworth Homework Club, which is supporting large numbers of both primary and secondary students. The Retirement Expo held in the Diocese in March attracted 150 people and 25 exhibitors.

Criminal Justice Ministry

The Anglican Criminal Justice Ministry continued to provide ministry in prisons, leadership in interfaith chaplaincy, and education to the church and community on the criminal justice system. During the year, there were over 10,000 separate instances of support for prisoners, their families and prison staff through prison chaplaincy services.

Chaplains work with many people whose families are being supported by Anglicare Victoria. Many of these families live in disadvantaged areas with 25 percent of the prison intake in 2003 coming from only 13 of Victoria's 647 postcode areas.

Our Chaplains are part of a multi-faith team which includes Anglicans, Catholics, Greek Orthodox, Uniting Church, Salvation Army, Buddhists, Muslims and Jews, working together harmoniously to provide the overall chaplaincy service in prisons.

Celebrating our Volunteers

In the past year we were fortunate to be supported by 638 foster carers, nearly 100 permanent carers and a number of lead tenants who provided well over 130,000 days of care for children and young people. In addition, we benefitted from the generosity of a further 1,042 volunteers who contributed 57,856 hours of time to us during the year. These people:

- ❑ helped to support families in danger of breakdown;
- ❑ drove thousands of kilometres to ensure children experiencing trauma from abuse and neglect or those requiring medical treatment obtained the specialist support needed, or to ensure children got to school;
- ❑ served breakfast to homeless men and women or to school children in disadvantaged areas;
- ❑ provided emergency relief;
- ❑ became a role model for a child or young person;
- ❑ helped us with our fundraising activities;
- ❑ provided administrative support;
- ❑ co-ordinated or assisted with group programs for parents and families;
- ❑ taught a young person computer skills or to play a musical instrument; and
- ❑ undertook a range of other roles where their skills and interests, and our needs or a client's needs, converged.

Some were corporate volunteers such as the staff from NAB who managed the toy store for us at Christmas for the third consecutive year. Our volunteers came from all walks of life. Their generosity of spirit sustains us and we gained something from the involvement of each and every one of them.



Volunteers helped to distribute over 5,000 toys leading up to Christmas.

Area Highlights

Box Hill

A former Anglicare client returned to the StepOut program as a Lead Tenant – providing a positive role model to the young women in her house as they learnt independent living skills. Our staff are delighted to see such a positive outcome from their hard work and to see a young person so prepared to make a difference to other people's lives.

Our Meridian Youth Team conducted a 'Building Better Relationships' program in a local school setting with 125 Year 9 students. The program focuses on enhancing young peoples' resilience by fostering healthy and respectful relationships in all areas of their lives. The pilot was so successful we have been asked to expand it to more local secondary schools.

Our Adolescent Community Placement program worked in partnership with the parishioners of the Anglican Parish of Box Hill to support a young person living under the care of an older male sibling. The partnership successfully supported them as they developed their independent living skills.

Our Financial Counsellor has successfully run a number of presentations in local secondary schools for Year 11 students with the aim of educating young people about budgeting and financial responsibility.

Broadmeadows

Our involvement in the Hume Integrated Family Services Partnership included development of an intake process incorporating consultation with a community-based DHS Child Protection Worker. This has enabled better service provision through improved decision-making at the time of referral.

Our new Craigieburn office opened in June at a site offering improved access for local families. The site already has three Family Support Case Workers and an Emergency Relief Service and has been well received locally.

We received a further two years funding from the Federal Government for our Weekend Respite Care program which currently supports an average of 28 local children every month. The program links parents in need with one other family within their community to offer continuity of support.

On-site location of staff from other service providers such as Berry Street Victoria, a domestic violence outreach program, and Australian Lebanese Welfare, enabled more integrated and responsive consultation as well as support and service delivery for clients.

We developed a model in collaboration with Berry Street Victoria to make our family violence programs more accessible. The model, called 'Parenting After Violence', has been run successfully several times in Whittlesea and we are looking to expand to other localities.

We received funding from DHS for a Family Violence Children's Worker as our part in the service provision under the new Northern Integrated Family Violence Services banner.

Frankston

The Frankston Integrated Family Services model was revised to provide easier access to services for clients and referral sources. By 30 June the new model was the driving force behind a massive 35 percent reduction in notifications in the area in relation to the key criteria of 'emotional abuse and neglect'.

Our partnership with Cranbourne Secondary College, in which we provide parental skills training and community development activities for the parents of Year 7 students, has been so successful that during the June quarter 146 parents, teachers and other community members were involved in volunteering time at the school.

A successful carer recruitment program was run during the year, which helped to address the chronic shortage of carers in the system, and included the launch of an informative video and DVD about caring.

Gippsland

East Gippsland Aboriginal Cooperative Boorai Women's Group invited us to provide parent education on a continuing basis. The women are exploring a range of parenting options and activities to enable them to determine what is best suited to them.

In the annual Law Week Debate organised by the Gippsland Community Legal Service, students from Kurnai College Precinct Campus and Yarram Secondary College debated whether 'Drug traffickers convicted in Victoria should receive the Death Penalty'. The debate generated great interest in the Gippsland community and comprehensive coverage in the local media. The Magistrates' Court Victoria provided team prizes.

Two weekend camps were held during the year for grandchildren and grandparents who are their primary carers. For many people in this unusual situation, the camps provided a rare chance to come together with others for fun, friendship and mutual support.

The merging of our Family Support and Family Matters teams - which involved the development of a new structure including an Intake and Assessment Team, a Waiting List Manager, a Volunteer Coordinator, a Family Counsellor and a Case Management Team - has resulted in us being able to provide a more timely and responsive service to Gippsland families in need.



Parentzone successfully launched Parent Support Groups at both Morwell and Mirboo North Primary Schools during the year.

Area Highlights

Knox

The Knox Family Care Network – a network of family services providers in the area that we were active in developing – was launched and has already generated a range of service delivery enhancements and efficiencies including improved shared training and improved processes for referrals between agencies.

In partnership with Connections we were successful in obtaining funding to introduce the Innovations program for the delivery of family services in Knox. The new team came together in February 2006.

We joined in partnership with Anglican parishioners from Ferntree Gully and Rowville to provide much-needed support to a family after the birth of their second set of young twins.

The Croydon site continues to be a hub for a range of client, program and community activities. During the year it provided a friendly and welcoming environment for contact between children in care and their parents. We also ran two parenting groups for people with an intellectual disability and for people with a mental illness.

Access for people with a disability has been enhanced at our Bayswater site with reception being relocated to the ground floor. The new waiting room now provides parent education materials and resources.

Preston

A number of presentations regarding homework support were made to local primary school Year 6 parents to assist them with their children's transition to secondary school.

A Young Men's Group has been developed for marginalised young men in the area. It has a health focus and involves a wide variety of activities and guests of interest. The pilot program has attracted 10 young men who have been referred from a range of service providers.

We worked collaboratively with the Darebin Innovations provider agencies to develop a weekly Support Group for their clients to combat social isolation and lack of community connection.

Family Services workers trained with the Victorian Aboriginal Child Care Agency to enable Aboriginal and non-Aboriginal staff to work together to maximise the outcomes for our Indigenous clients.

Our Foster Care Team completed the Quality Assurance Strategies audit implemented by DHS and worked hard to achieve its commitment to improve service provision to carers and children.

Werribee

The delivery of Financial Counselling services at Yarraville was restructured to better meet the demand profile of the area and a new Financial Counselling service commenced in Sunshine in February 2006.

Choices program staff piloted an anti-natal group in partnership with the Royal Women's Hospital. This six-week program for 12 young women under 22 years of age focused on the social and emotional aspects of pregnancy, and on birth education and parenting.

The Family Services Team ran an innovative program at Werribee Primary School for Years 5 and 6 girls to assist them with the transition to secondary school and to provide a forum for other issues they wished to discuss.

Funding was received from DHS to employ a full-time forensic Drug and Alcohol Counsellor, and from Wyndham City Council to employ two full-time Youth Counsellors, to meet growing demand in the area.

Workshops on dealing with bullying were successfully undertaken at a number of schools in the Werribee area.

Yarra Ranges

The redevelopment of our Lilydale site is underway and will be completed early in 2007. It will facilitate better coordination among workers and co-location with other relevant services, resulting in better outcomes for clients.

Our Friends of Kids In Care program won one of only two Super Support Awards given by the Foster Care Association of Victoria at their state conference in May. This Friends program has now been supporting foster carers and at risk families for 15 years.

The TrACK program (Treatment and Care for Kids) - which provides intensive therapeutic home-based care for children to assist them recover from abuse-related trauma - has been so successful that DHS has adopted its key components as the basis for a model of therapeutic foster care across Victoria.

Federal Government funding was received to run group programs for boys in two local primary schools. The programs provide boys with positive male role models to share experiences on the journey from boyhood to manhood.

We completed the first full year of the Yarra Ranges Innovations partnership with Connections. The partnership was successful in achieving a reduction in child protection notifications in the Shire.



Boys program participants hiking during a weekend camp

Fundraising



We are delighted by the extent to which our supporters got behind our fundraising activities during 2005/06.

As has been the case throughout our long history, without the support of many generous individuals, businesses, churches of various denominations, Anglican and government schools, community organisations, and philanthropic trusts and foundations, it would simply not be possible for us to provide the quality and extent of care and support we do for the tens of thousands of vulnerable families, young people and children who turn to us each year.

There was a 12.2% increase in donations made to our four public appeals during the year at a time of intense competition among very worthy local, national and international causes.

This once again demonstrates the generosity of Australians in supporting those living on the margins of society. We thank our many loyal donors for their continued support and those that supported us for the first time this year.

In addition, many individuals and community organisations throughout Victoria sold our cards and angel merchandise last Christmas. Seventy-eight school campuses, 28 businesses, 24 parishes, five Anglicare Auxiliaries, 12 card shops and well over 200 individual volunteers raised funds to support our programs for children in care.

We also appreciated the support of well known Melbourne media and sporting personalities who helped to launch our Appeals and attended other fundraising events during the year.



We worked closely with the Anglican Dioceses of Gippsland and Wangaratta to run successful Winter and Christmas Appeals with the money raised used to support local programs. Many parishes throughout these Dioceses again strongly supported our work.

Funding received from philanthropic trusts and foundations contributed significantly to our work. The Department of Victorian Communities through the Community Support Fund also approved a major grant to assist with the redevelopment of our Family Services Centre at Lilydale. Trusts that supported us in 2005/06 are listed on our Contributors page and we thank the trustees in every case for having confidence and faith in our workers to continue to deliver the high quality, vital services needed by vulnerable and marginalised Victorians.

The Children's Foundation continued to provide significant support to our foster care programs and our Parentzone resource centres. Similarly, we appreciate the continued support of CEBS Anglican Boys Society's Community Services Trust; the Trustees of the Hindson Trust for our family counselling, family support and foster care programs; and the Opportunity Youth Services Trust for our youth support, accommodation and counselling programs.





300 guests helped raise over \$100,000 for Anglicare Victoria's work at our annual Dinner with the Angels.



Two major fundraising events were held during the year. 'Dinner with the Angels' was held in November 2005 at the Grand Hyatt Melbourne and has now become a key component of our annual Christmas Appeal activities. It was supported by 13 of Melbourne's leading restaurants and featured a performance by Marcia Hines. Our inaugural 'Wearable Art' event was held at the Melbourne Art Rooms in August 2005. It was supported by 14 of Australia's leading jewellers and jewellery designers and is aimed at a 20s and 30s age group. A subsequent Wearable Arts event was held in July 2006 and was also very well supported. All events proved to be a great success in terms of

both fundraising and awareness raising among new audiences.

Finally, we report that our regular giving program, Care Partners, is gaining momentum. Donors can choose to support our work with children, emergency relief to families in need, or our advocacy work through the program.

Regular giving is the most effective way to help Anglicare Victoria to break the cycle in which vulnerable people find themselves. The certainty it provides enables us to better plan and reduce administrative and fundraising costs.

Once again, we greatly appreciate the support of all who have helped us to assist our clients in the past year.



Major Contributors

The Board, Management and Staff of Anglicare Victoria are extremely grateful to all our donors for their ongoing support.

Allens Arthur Robinson Lawyers	Glenys Lorraine Barnard Estate	Roche Thiess Linfox Joint Venture
All Saints Anglican Parish, Rosebud	Goldman Sachs JB Were	Sarah & Baillieu Myer Family Foundation
All Saints Anglican Parish, Clayton	Grace & Herbert Foulkes Charitable Trust	Sentinel Foundation
Amelia Eliza Holland Trust	Greenlight Foundation Ltd	St Alfred's Anglican Tennis Club
Andrew James Brown Estate	Grosvenor Foundation	St Andrew's Anglican Church, Brighton
Anglican Diocese of Gippsland	Gwendolyn Beryl Thornton Estate	St James' Anglican Church, Dandenong
Anglican Diocese of Melbourne	Helen Macpherson Smith Trust	St John's Anglican Church, Bentleigh
Anglican Diocese of Wangaratta	Herald & Weekly Times Pty Ltd	St John's Anglican Church, Camberwell
Anglicare Victoria Rosanna Auxiliary	Henry B Smith Charitable Trust	St John's Anglican Church, Bairnsdale
Anglicare Victoria Eltham Auxiliary	Hindson Trust	St John's Anglican Church, Malvern East
Anglicare Victoria Strathmore Auxiliary	Holy Trinity Anglican Church, Surrey Hills	St John's Anglican Church, Mansfield
Anglicare Victoria Sunshine Auxiliary	International Power	St. John's Anglican Parish, Toorak
Anglicare Victoria Vermont Auxiliary	Invergowrie Foundation	St. John's Chrysostom Anglican Parish, Brunswick West
A G Birch Bequest	Jack Brockhoff Foundation	St John's Opportunity Shop
ANZ Charitable Trusts	Jackson Five Pty Ltd	St Luke's Anglican Church, South Melbourne
Applied Chemicals International Pty Ltd	Jean Hammond Estate	St Mary's Anglican Church, Caulfield
Auric Consulting Services Pty Ltd	Joe White Bequest	St Mary's Anglican Church, Sunbury
Barrett Family Trust	Kathleen Louisa Curwen-Walker Estate	St Paul's Anglican Church, Boronia
Beatrice Letty Lee Estate	Kilwinning Trust	St Peter's Anglican Church, Eastern Hill
Bell Charitable Fund	Kimberley Foundation	St Philip's Anglican Church, Box Hill
Blaze Acumen	Klaus Singer Estate	St Stephen's and St Mary's Anglican Church, Mt Waverley
Broughton Hall Hostel	Lily Maude Payne Estate	Stanley Charles Stockton Estate
CEBS Anglican Boys Society	L I Roach Estate	Stuart J Castle Pty Ltd
Christ Church Anglican Church, Brunswick	L J Colliver Estate	The Anglican Parish of Clifton Hill/North Fitzroy
Collier Charitable Fund	Llewellyn Evans Estate	The Anglican Parish of Diamond Creek
Community of the Sisters of the Church	Lord Mayor's Charitable Fund	The Anglican Parish of Wandin/Seville
Danar Pty Ltd	M J G Office Partitions	The Anglican Parish Woodend
Danks Trust	Marrich Charitable Foundation	The Field Group
Décor Corporation Pty Ltd	Mars-Stride Trust	The Keith Chenhall Foundation
Department of Victorian Communities	Melbourne Community Foundation	The Marian and E H Flack Trust
Dorothea Martha Ardlie Sergeant Estate	Melbourne Girls' Grammar School	The Portland House Group
Edith Kemp Memorial Trust Fund	Melbourne Grammar School	Tivey Memorial Fund
Edmund George Barker Estate	Melbourne Newsboys Club Foundation	Trust Company of Australia Ltd
Edna Curwen-Walker Estate	National Australia Bank	Victorian Community Foundation
Equity Trustees	N J Horton Charitable Fund	Walter Campbell Memorial Trust
Eva Jean Halliday Estate	N J Horton & Grace Horton Charitable Fund	William Buckland Foundation
Fletcher Jones Australia Support	Opportunity Youth Services	William Angliss (Vic.) Charitable Fund
Flora & Frank Leith Charitable Trust	Order of St Lazarus of Jerusalem	William Ross Architects
Florence & Melville Hughes Trust	Peningsma Pty Ltd	Winifred & John Webster Charitable Trust
Frances Ingoldsby Burnside Estate	Perpetual Trustee Company	Yarra Valley Grammar School
Frances May Mackay Estate	John & Thirza Daley Charitable Trust	101 Collins Street Pty Ltd
Frederick B Shepherd Estate	Frank & Sybil Richardson Trust	
G F Matthews Estate	PSI Psychology	
G Hemmings Estate	R E Ross Trust	
Gippsland Grammar School	Ricketson Foundation	

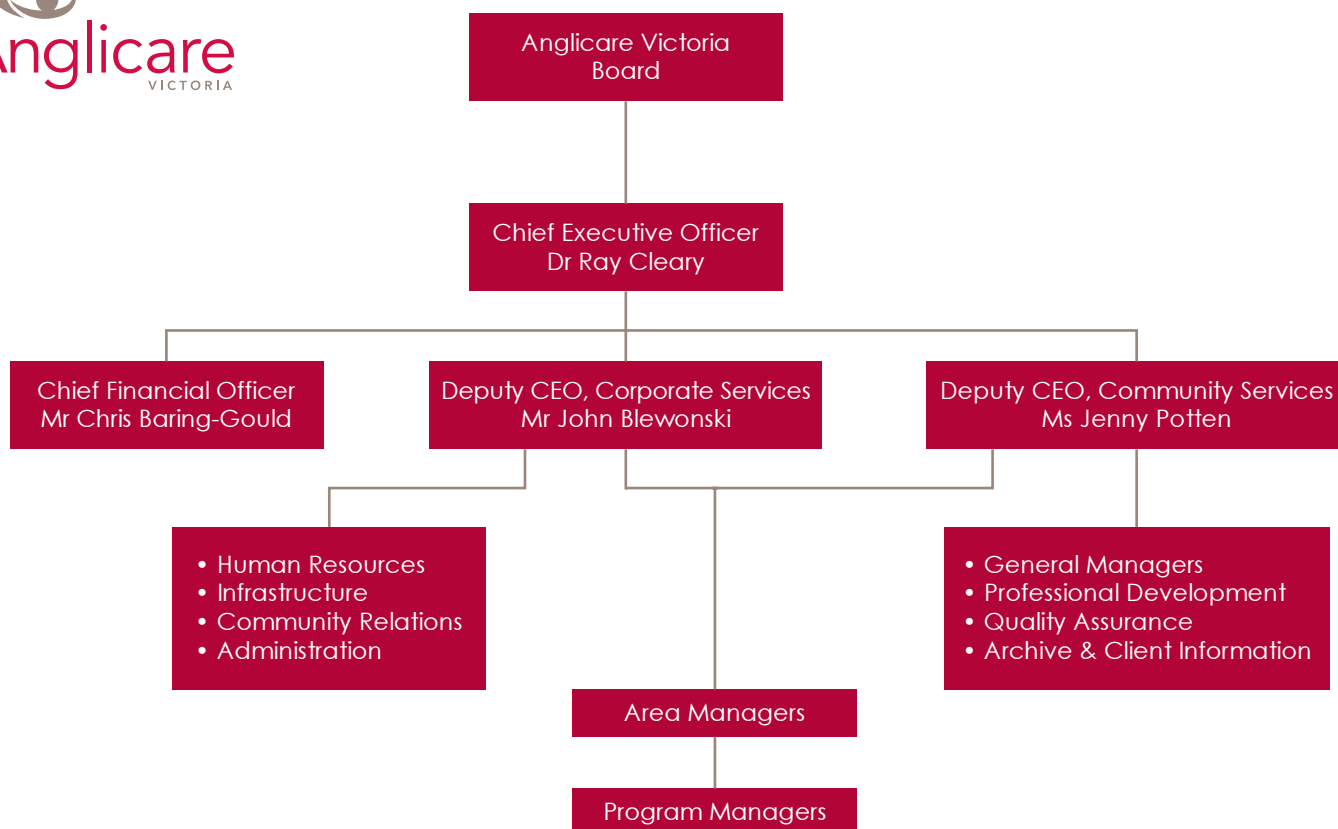
New Organisational Structure

Among the recommendations from the review of our Strategic Plan adopted by the Board in February 2005, was the need for the development of a new management structure for the Agency. This recommendation arose through various staff forums that highlighted the need for a change in organisational culture in order to provide greater local specialisation - ensuring decision-making and responsiveness in relation to service delivery better reflected the needs of clients and staff at the local level.

The result has been the development of a new model that sees a shift from 'Regional' Management to local 'Area' Management, where a local Area Manager manages one or two sites in close

geographical proximity. Area Managers are supported by Program Managers and Central Office specialist managers in day-to-day management of programs in their Area.

During 2006, Senior Management has been working to develop the process for the implementation of the new structure, commencing with the appointment of Area and Program Managers and Area Accountants from February and a gradual transition of our regions to Area Management. Our eight Areas are listed in the Directory on page 34.



Council Members

Ms Sally Alsop	Mrs Helen Duncan	The Revd Murray Morton
The Revd Stephen Ames	The Rt Revd David Farrer	Archdeacon Andrew Oddy
Mrs Helen Baddeley	Dr Barbara Fary OAM	Ms Bianca Pezzutto
Dr Graeme Blackman	The Revd Cecilia Francis	The Revd David Powys
Mr Malcolm Boyce	Ms Jacqueline Gleeson	Ms Liz Prideaux
The Ven Keith Brice	Mrs Lilian Harrington	Mr Colin Reilly
Mr Beryl Camp	Mr Barry Harrison	Mr Ian Smith
The Revd Barbara Colliver	Mr Peter Horsburgh	Mr Richard Tudor
Ms Beryl Coombe	The Rt Revd Philip Huggins	Mr Gary Underwood
Dr Denise Cooper-Clarke	Prof Alun Jackson	The Revd Anne Wakeling
Mrs Marjorie Cummins	Ms Bev Lacock	The Revd Canon Graeme
Mrs Beth Delzoppo OAM	The Revd Barry Martin	Winterton
Mrs Jenny Disney	Ms Sue McCarthy	Mr David Woods

Board Members

Dr Graeme Blackman
Chairman

Mr Peter Horsburgh
Deputy Chairman

Mrs Beth Delzoppo OAM
Board Secretary

Dr Barbara Fary OAM

Mr Andrew Guy

The Revd Barry Martin

Ms Sue McCarthy

Ms Liz Prideaux

Dr Winsome Roberts

Mr David Stewart

Mr Richard Tudor

Mr Gary Underwood



*Pictured from back left;
Mr Peter Horsburgh, Mr Gary Underwood, Dr Graeme Blackman,
CEO Dr Ray Cleary, Mr Richard Tudor
Pictured from front left;
Ms Sue McCarthy, Ms Liz Prideaux, Dr Winsome Roberts, Mrs Beth
Delzoppo, Revd Barry Martin
Absent;
Dr Barbara Fary, Mr Andrew Guy, Mr David Stewart*

Senior Management Team

Dr Ray Cleary
Chief Executive Officer

Ms Sally Alsop
General Manager Gippsland

Mr Chris Baring-Gould
Chief Financial Officer

Mr John Blewonski
Deputy Chief Executive Officer
Corporate Services

Ms Marg Chipperfield
General Manager Placement
and Support

Fr Michael Hopkins
General Manager Parish Partnerships and
Community Development

Ms Rosie Pizzi
General Manager Family Services

Ms Jenny Potten
Deputy Chief Executive Officer
Community Services



pictured from back left;
Mr John Blewonski
Fr Michael Hopkins
Mr Chris Baring-Gould
Dr Ray Cleary

pictured from front left;
Ms Jenny Potten
Ms Wendy Pascoe
Ms Rosie Pizzi
Ms Sally Alsop

Absent:
Ms Marg Chipperfield

Committee Members

Audit Committee

Ms Sue McCarthy (Chair)
Mr Chris Baring-Gould
Ms Jane Harvey
Mr David Stewart

Finance Committee

Mr Andrew Guy (Chair)
Mr Chris Baring-Gould
Dr Graeme Blackman
Dr Ray Cleary
Mr Peter Horsburgh
Ms Sue McCarthy
Mr David Stewart
Mr Gary Underwood

Friends Committee

Mr John Blewonski
Mr Malcolm Boyce
Mrs Jenny Disney
Ms Lilian Harrington
Ms Liz Prideaux
Mr Dennis Sherwell
Mr Ian Smith
Mr John Taaff

Research Ethics Committee

Associate Professor Ruth Webber (Chair)
Dr Barbara Fary OAM
The Revd Dr Helen Granowski
Dr Clem Gruen
Ms Margaret Harrison
Dr Margaret Kertesz
Mr Philip Lynch
Dr Cas O'Neill
Ms Jenny Potten
Dr Con Tsingas
The Revd John Howells (retired)
Dr Phillip Swain (retired)

Social Policy Committee

The Revd Barry Martin (Chair)
Dr Lynda Campbell (Former Chair – retired)
Dr Ray Cleary
Mrs Beth Delzoppo OAM
Dr Barbara Fary OAM
Ms Margaret Matters
Ms Jenny Potten
Dr Con Tsingas
Mr Richard Tudor

FINANCIALS AS AT 30 JUNE 2006

Balance Sheet as at 30 June 2006

	2006 \$'000's	2005 \$'000's
Current Assets		
Cash and Cash Equivalents	6,635	7,841
Receivables	688	858
Inventory	120	89
Total Current Assets	7,443	8,788
	7,443	8,788
Non-Current Assets		
Investments	28,161	21,868
Property, Plant and Equipment	13,638	11,310
Total Non-Current Assets	41,799	33,178
Total Assets	49,242	41,966
Current Liabilities		
Payables	1,415	775
Employee Benefits	2,561	2,363
Deferred Income	3,082	2,887
Total Current Liabilities	7,058	6,025
Non-Current Liabilities		
Employee Benefits	963	676
Total Non-Current Liabilities	963	676
Total Liabilities	8,021	6,701
Net Assets	41,221	35,265
Equity		
Establishment Corpus	23,767	23,767
Reserves	15,876	12,405
Accumulated Surplus / (Deficiency)	1,578	(907)
Total Equity	41,221	35,265

Notes:

1. Where necessary, comparative information has been reclassified to achieve consistency in disclosure.

2. The economic entity Anglicare Victoria includes the net assets of the Pitt Family Trust Limited, the John and William Hindson Trust and the Estate Alexander Rushhall Charitable Fund.

FINANCIALS AS AT 30 JUNE 2006

Income	Note	2006 \$'000's	2005 \$'000's
State Government Funding		28,032	27,370
Commonwealth Government Funding		1,958	1,485
Local Government Funding		430	419
Tied Fundraising Income	2	4,095	1,715
Untied Fundraising Income		2,200	2,265
Bequests		774	739
Client and other fees		737	818
Investment Income		2,314	2,350
Net Profit on sale of Assets		2,735	481
Total Income		43,275	37,642
Expenditure			
Placement & Support		17,648	17,074
Family Services		11,007	9,979
Community Services		5,119	4,917
Parish Partnerships & Community Development		1,340	971
Research and advocacy		159	156
Staff professional development and training		349	328
OH&S and other legislative compliance costs		149	148
Property and essential services management		431	420
Infrastructure and governance costs		908	914
Community Relations		824	787
Fundraising expenses		558	643
Write down of property and intangibles		253	1,196
Total Expenditure		38,745	37,533
Net Surplus	2	4,530	109
Accumulated deficiency at the beginning of the financial year		(907)	(3,502)
Less transfer to reserves		(2,045)	2,486
Accumulated Surplus / (Deficiency) at the end of the financial year		1,578	(907)
Notes:			
1. Where necessary, comparative information has been reclassified to achieve consistency in disclosure.			
2. The \$4,530 million result for 2006 has benefited from the following significant contributions: Private Trust - \$1.134 million, OYS donation - \$1.0 million.			
3. The economic entity Anglicare Victoria includes the net assets of the Pitt Family Trust Limited, the John and William Hindson Trust and the Estate Alexander Rushall Charitable Fund.			

Central

Central Office	103 Hoddle Street, Collingwood 3067	9412 6133
Anglican Criminal Justice Ministry	103 Hoddle Street, Collingwood 3067	9412 6133

Box Hill Area

7-11 Shipley Street, Box Hill 3128	9890 6322
------------------------------------	-----------

Broadmeadows Area

Broadmeadows	32 Railway Cres, Broadmeadows 3047	9301 5200
Craigieburn	33 Craigieburn Road, Craigieburn 3064	9333 8380
Lalor	8 Hurtle Street, Lalor 3075	9465 0322

Frankston Area

Cranbourne	38 Bakewell Street, Cranbourne 3977	5995 0866
Elsternwick	24-26 Riddell Parade, Elsternwick 3185	9523 1999
Frankston	51 Playne Street, Frankston 3199	9783 4888
Rosebud	1161 Pt Nepean Road, Rosebud 3939	5982 2586

Gippsland Area

Bairnsdale	5 Pearson Street, Bairnsdale 3875	5152 1213
Leongatha	8 Bruce Street, Leongatha 3953	5662 4561
Morwell	65 Church Street, Morwell 3840	5133 9998
Morwell	162 Commercial Road, Morwell 3840	5135 9555
Warragul	Suite 2, 3 Barkly Street, Warragul 3820	5622 2810

Knox Area

Bayswater	666 Mountain Highway, Bayswater 3153	9721 3688
Croydon	22 Croydon Road, Croydon 3136	9725 1622

Preston Area

Glenroy	32 Widford Street, Glenroy 3046	9306 0000
Preston	239 Murray Road, Preston 3072	9478 9633

Werribee Area

Werribee	2 Market Road, Werribee 3030	9742 5300
Yarraville	41 Somerville Road, Yarraville 3013	9687 5200

Yarra Ranges Area

Healesville	282-284 Maroondah Highway, Healesville 3777	5962 3255
Lilydale	47-51 Castella Street, Lilydale 3140	9735 4188

Parish Partnerships & Community Development

Albury*	103 Hoddle Street, Collingwood 3067	9412 6133
Box Hill*	520 Kiewa Street, Albury 2640	02 6021 3022
Craigieburn*	7-11 Shipley Street, Box Hill 3128	9890 6322
Cranbourne	33 Craigieburn Road, Craigieburn 3064	9333 8380
Dixon House*	38 Bakewell Street, Cranbourne 3977	5995 0866
Keilor*	2 Dixon Street, Clayton 3168	9543 8911
Lazarus Centre	Cnr Old Keilor Hwy and Kennedy Streets, Keilor 3036	0400 085 510
Lilydale*	203 Flinders Lane, Melbourne 3000	9639 8510
Mission House*	47-51 Castella Street, Lilydale 3140	9735 4188
Preston*	122 Napier Street, Fitzroy 3065	9486 0445
Sudanese Support Centre	239 Murray Road, Preston 3072	9478 9633
Sunshine*	30A Pickett Street, Footscray 3011	9687 9577
Wangaratta*	248 Hampshire Road, Sunshine 3020	9311 9925
Gippsland	4 Docker Street, Wangaratta 3676	5721 9088
	5 Pearson Street, Bairnsdale 3875	5152 1213

*Emergency Relief centres



Volunteering

We rely on the help of thousands of committed and caring individuals to volunteer their time to help support our work. Our volunteers come from all walks of life and provide expertise in a range of areas. When carefully matched according to their interests and skills, people find that volunteering is a rewarding way to give back to their community. We are always looking for people to help out as foster carers and respite carers, lead tenants in our residential programs, mentors, and in our emergency relief programs and fundraising activities - to name just a few opportunities.

Donating



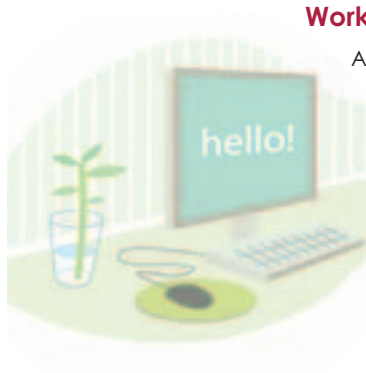
Giving Regularly Being a regular giver by becoming a 'Care Partner' or giving through the workplace is the most effective way to help us to break the cycle in which vulnerable people find themselves.

Selling Merchandise We have a range of Christmas cards and angel merchandise. If you, or your parish, school, community group, employer or business, would like to support us by helping us to sell merchandise this Christmas, we would love to hear from you.

Leaving a Gift in Your Will Each year, a number of our supporters choose to remember us in their Will. By leaving us a bequest, people can continue to help the most vulnerable in their community even after they have passed away.

Material Aid Donations of non-perishable food and new toys are always welcome, especially during Winter and prior to Christmas.

Working With Us



Anglicare employs more than 600 people in full-time, part-time and casual positions.

If you have the right skills and a commitment to providing quality service to children, young people and families, we may have a career opportunity for you.

We operate with Christian values and ethics and while we employ many people from non-Christian faith traditions, all our employees uphold the values and mission of the Agency by engaging in compassionate service for their clients and the communities we serve. Our website (www.anglicarevic.org.au) is updated each week with new employment vacancies.

For further information on any of the ways you can help make a difference, please call 9412 6133 or email info@anglicarevic.org.au



Our Mission

The Agency exists to create a more just society by expressing God's love through service, education and advocacy.

Our Vision

Anglicare Victoria exists to resource and empower children, young people and families to achieve their full potential through the promotion of social justice, the strengthening of local communities and the provision of quality innovative services.

www.anglicarevic.org.au